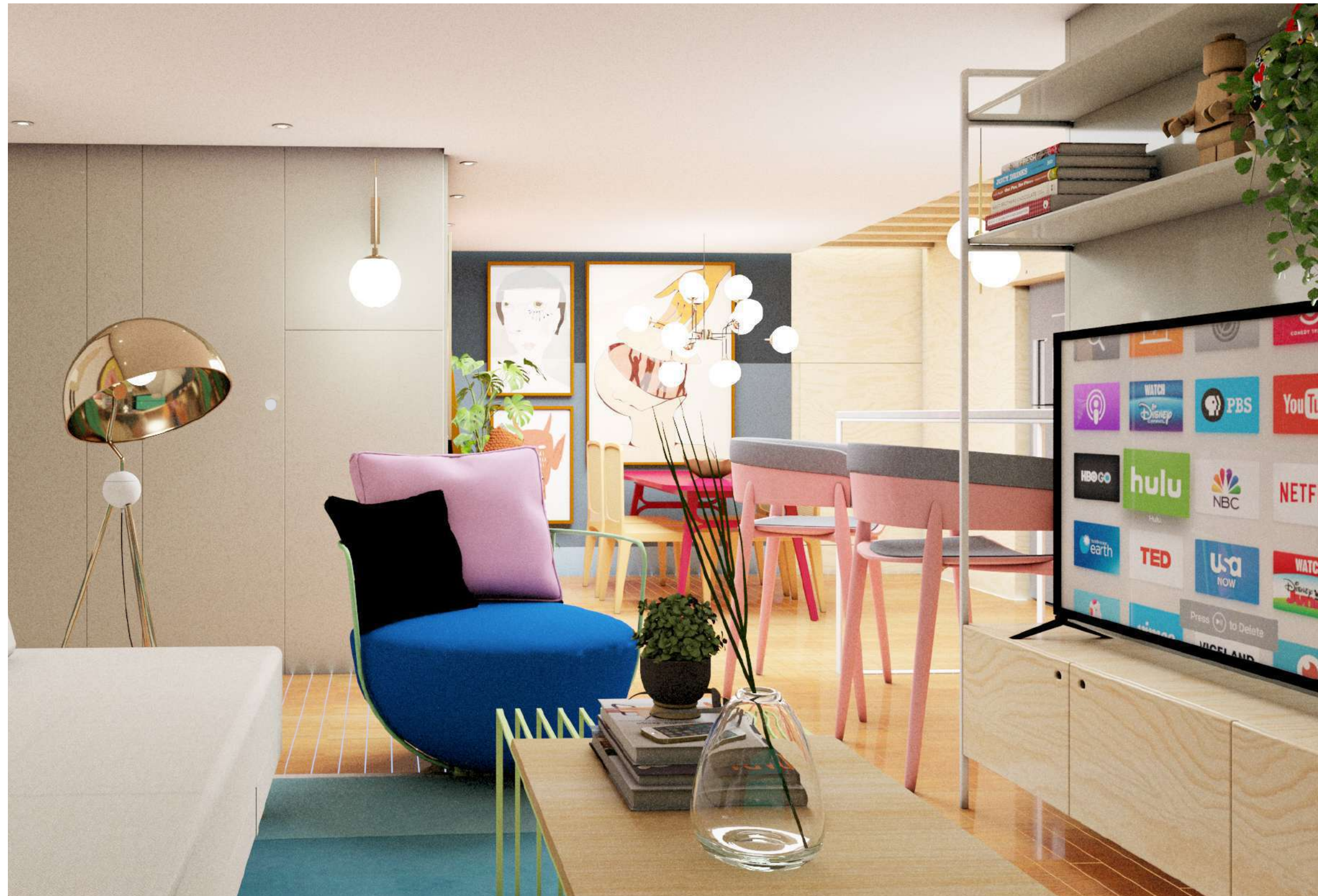


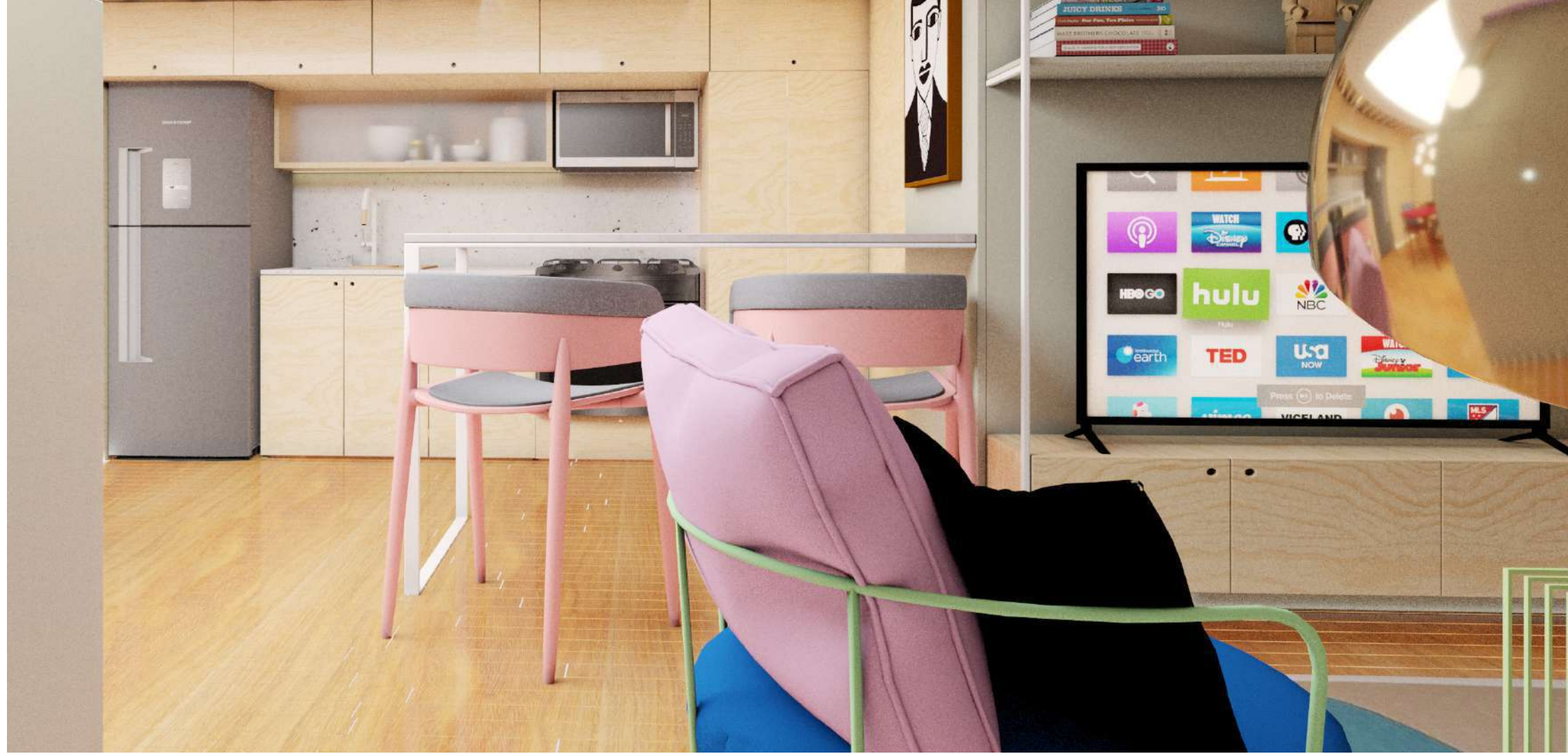
AP 01 - JUN 2021

• • •

AP 01

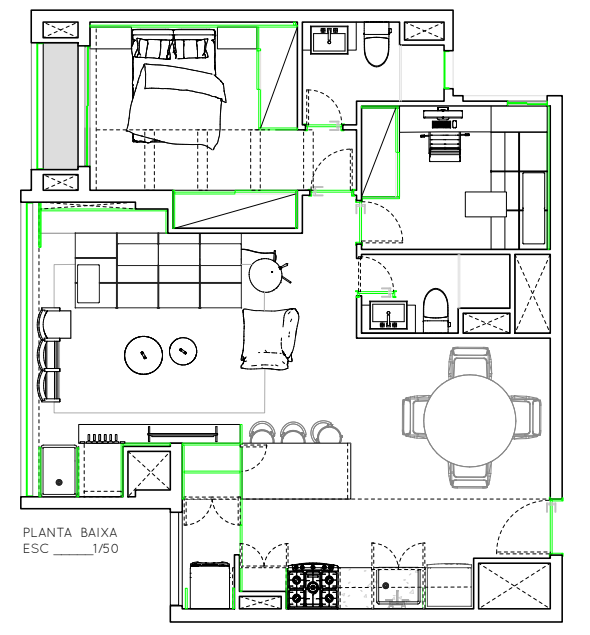
Reform of an apartment located in Sao Paulo with a contemporary style that connects with the client's personality

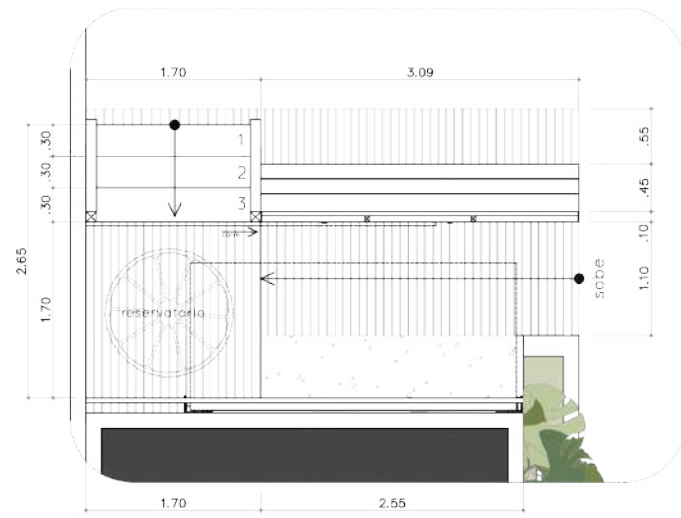




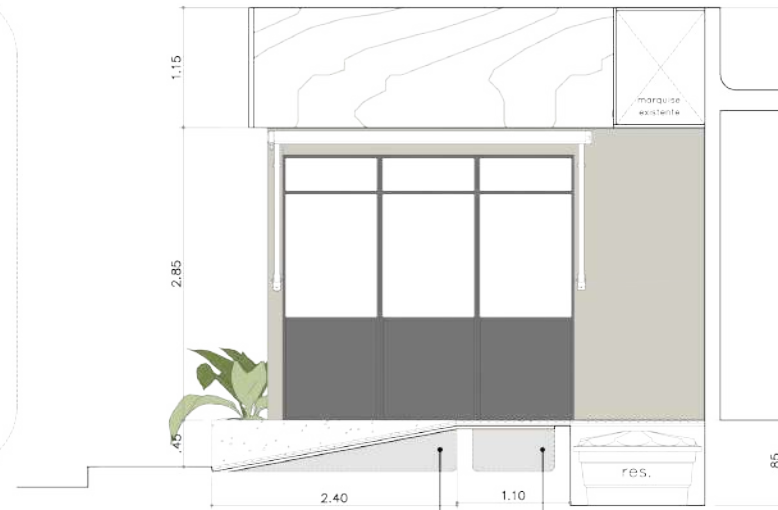
...

The living room connects with the other main space, creating a large, open environment, integrated to meet the demands of daily use and to simplify the life of the young couple..

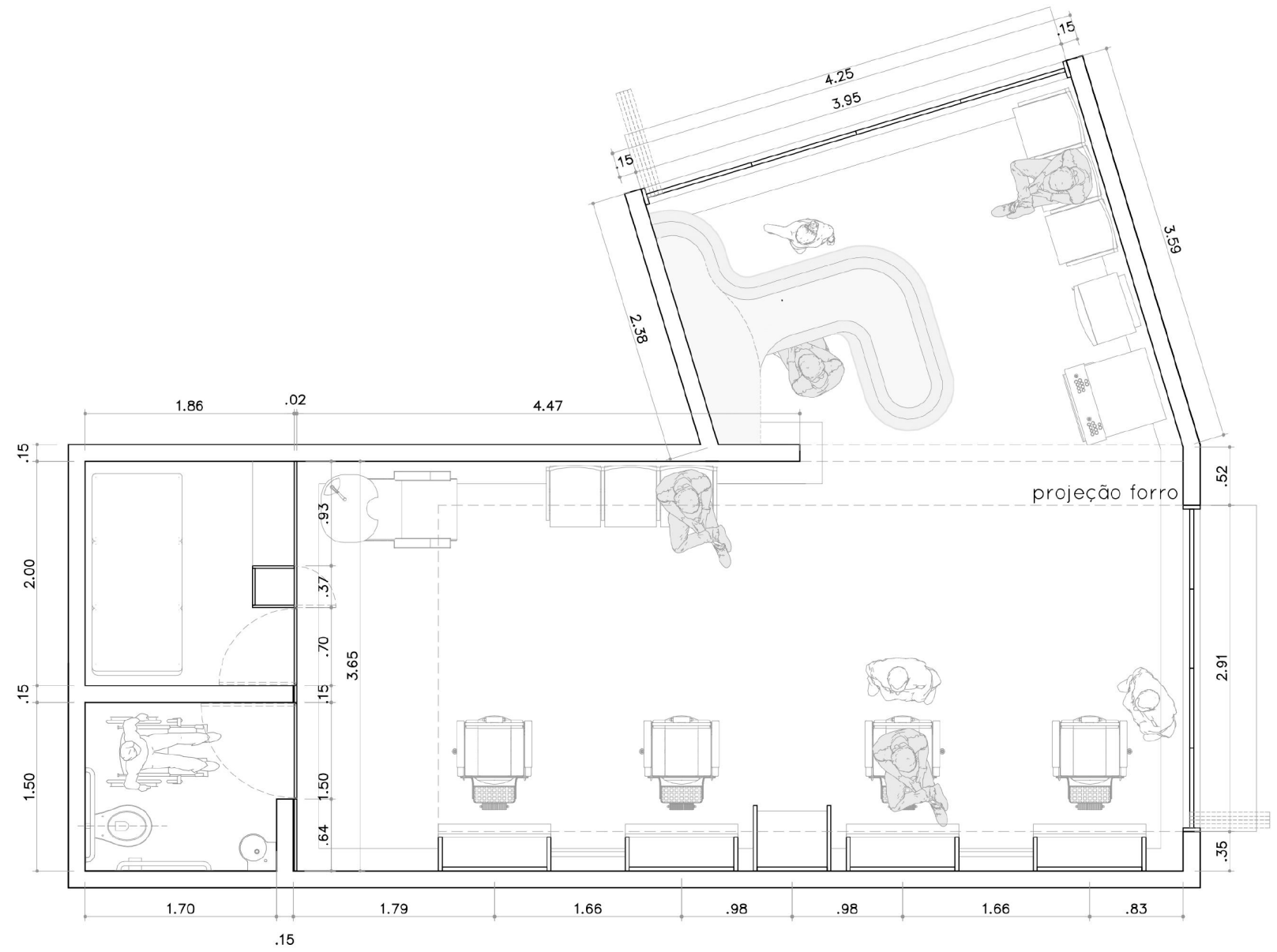
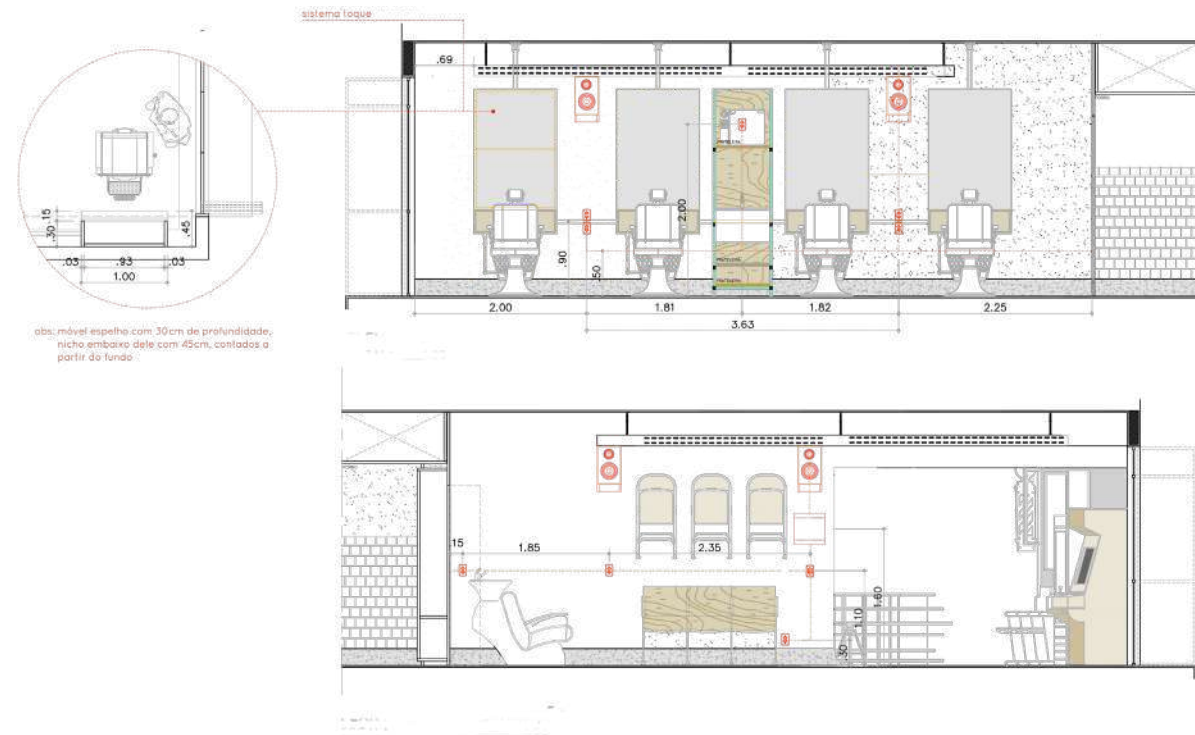




PLANTA BAIXA - EXTERIOR

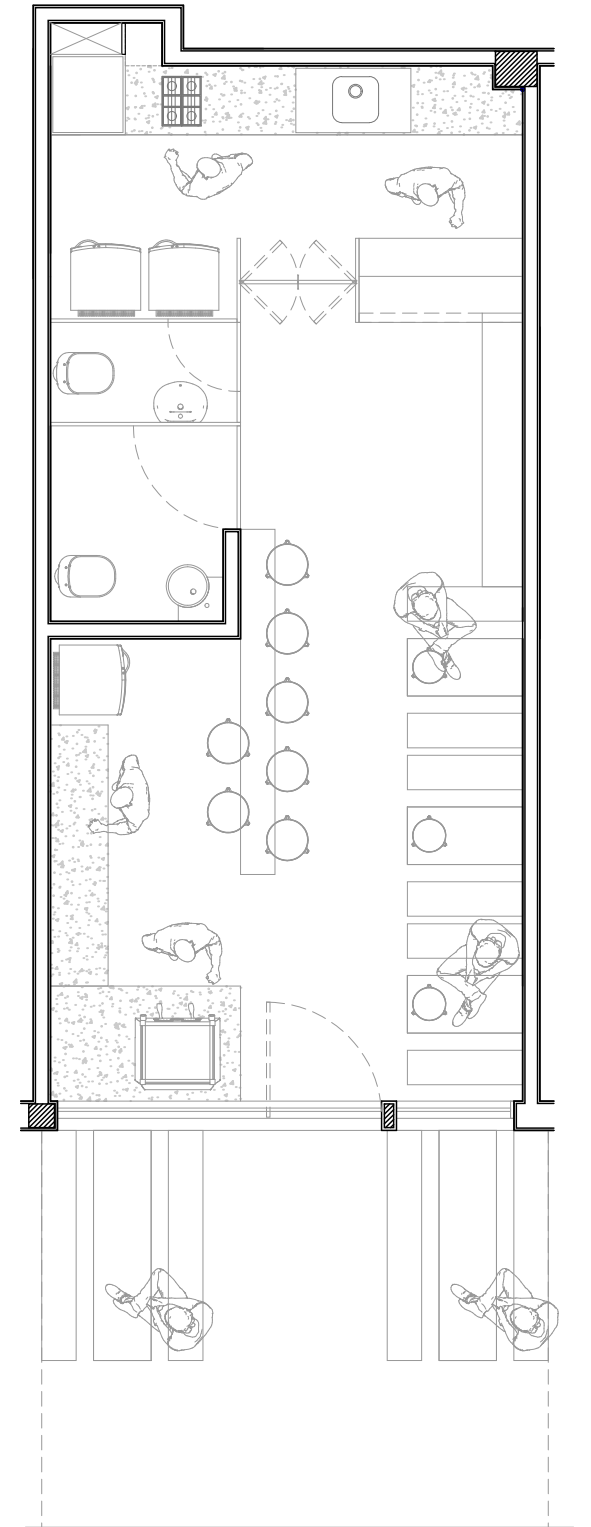


ELEVÇÃO- EXTERIOR



BARBER SHOP

Modern Barber Shop with an elegant, soft industrial style. The project follows all sanitary and accessibility laws.



• • •

COFFEE SHOP

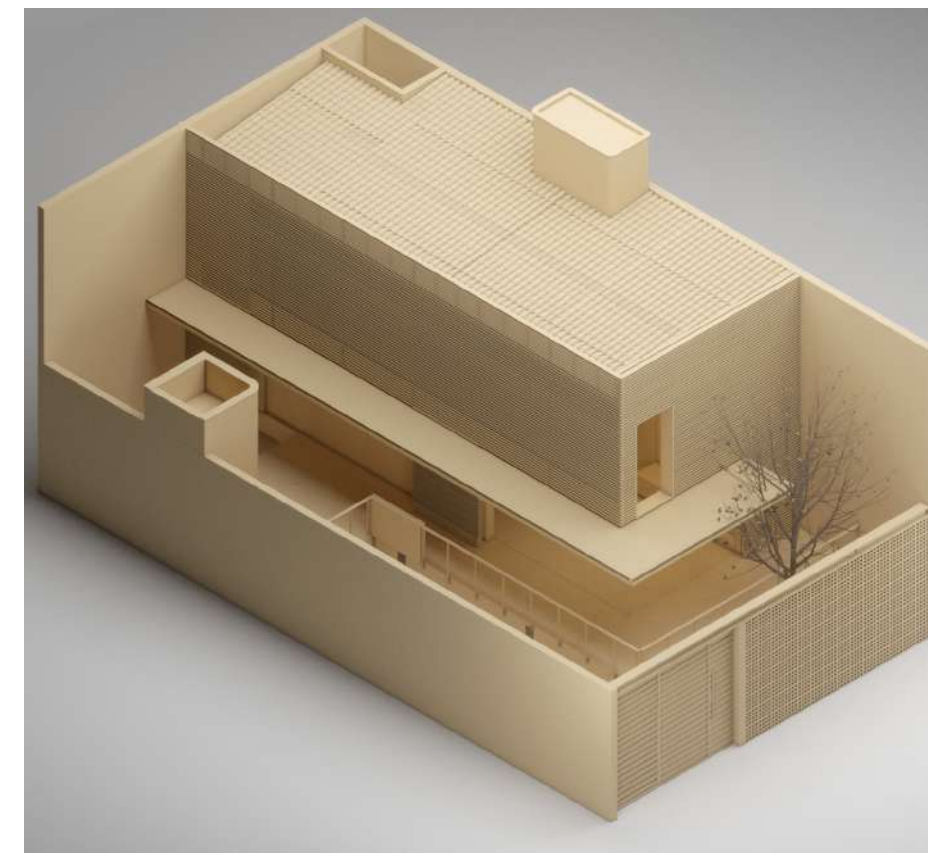
Design for a coffee shop in Brazil with a clean, soft industrial style.

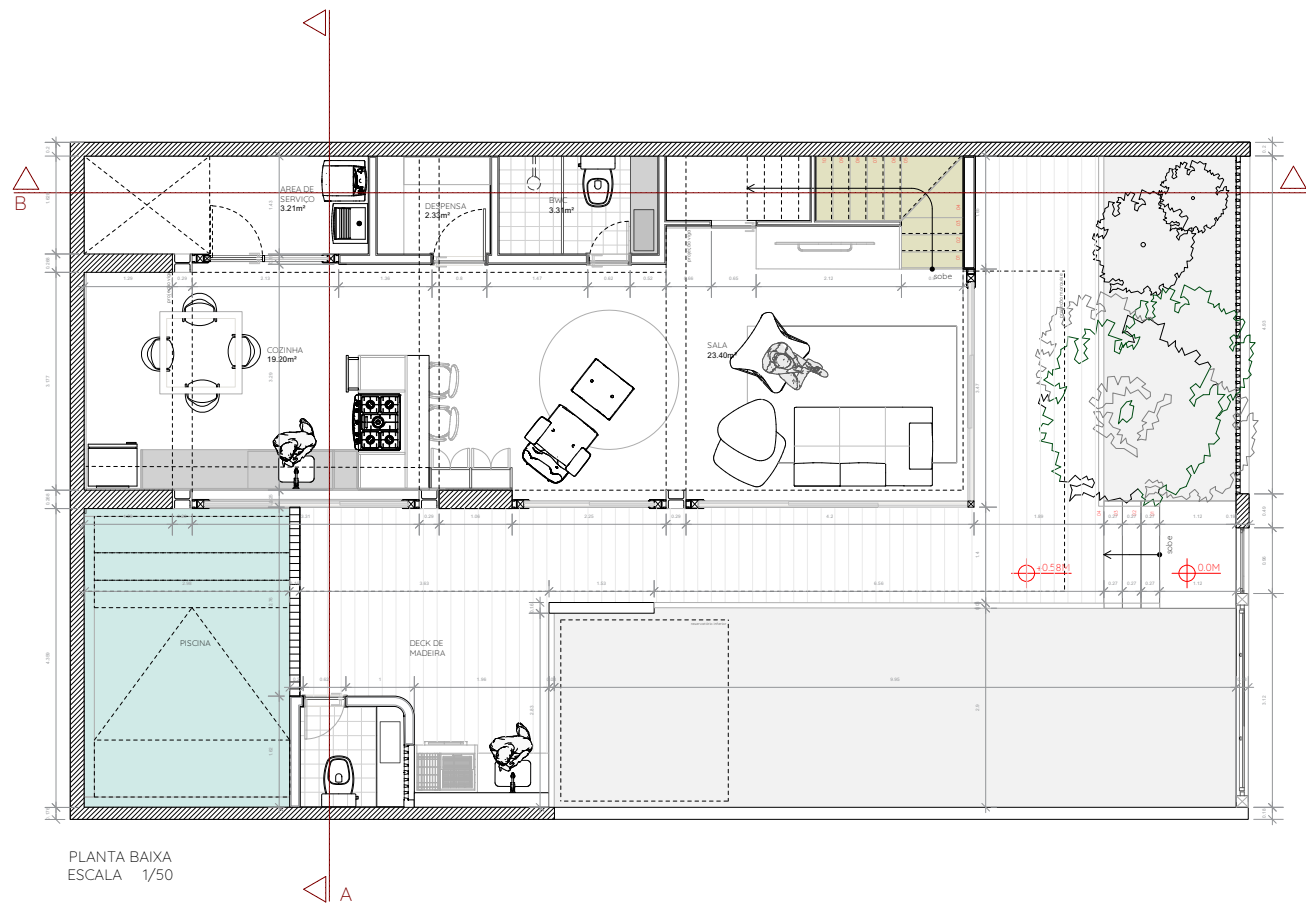
HOUSE 01- DEZ 2021

•••

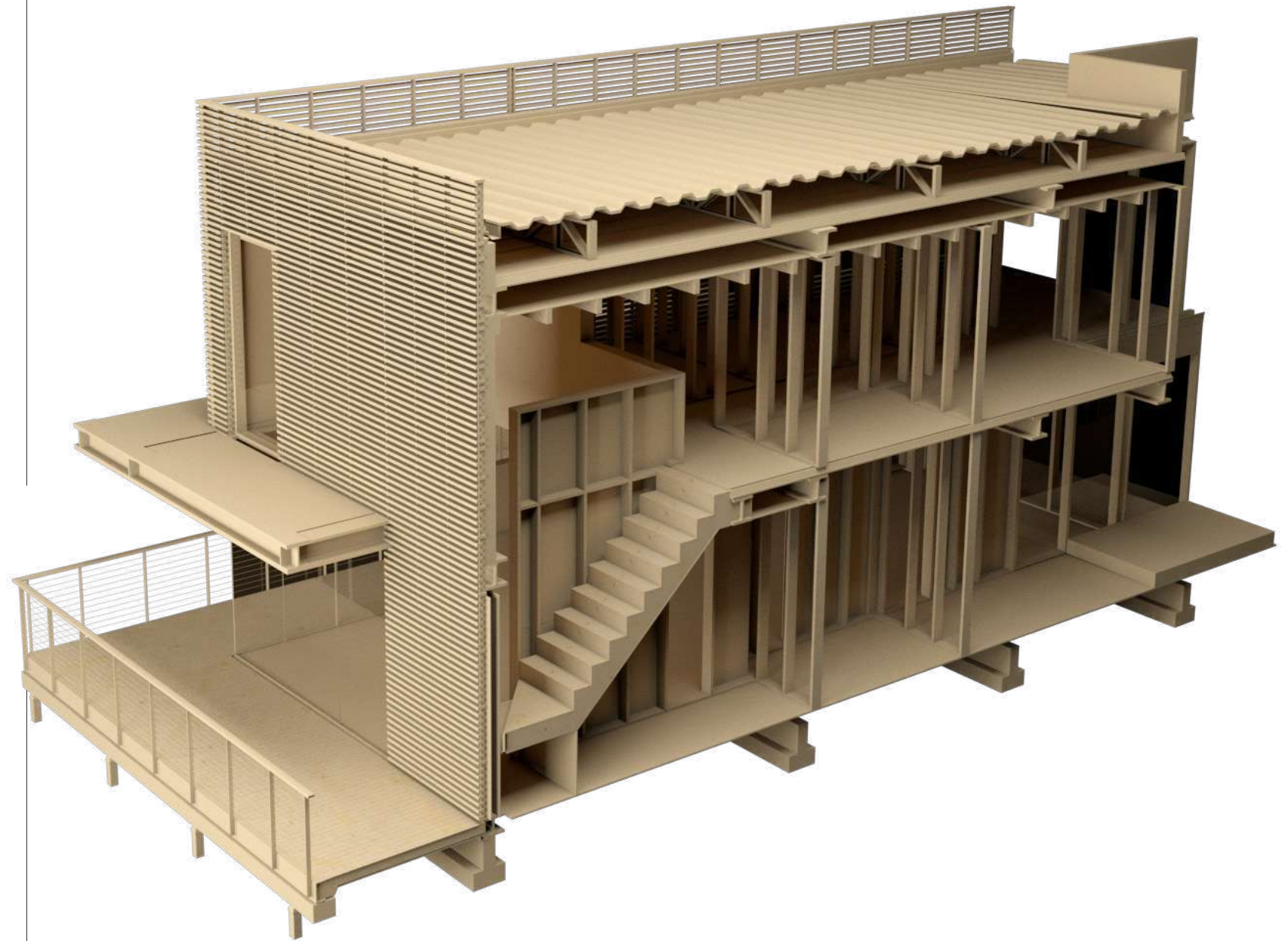
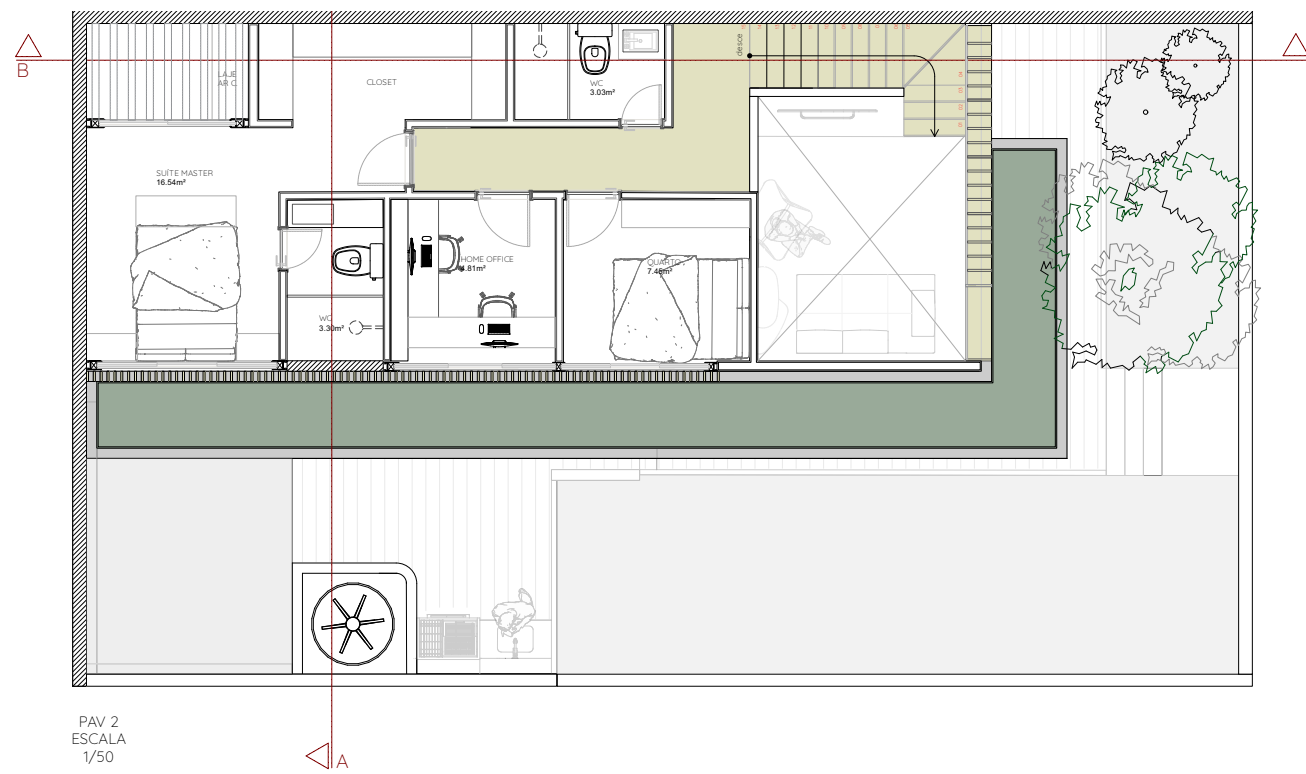
HOUSE 01

Single Family residence on a lot in the Sitio Histórico(historic) district of Olinda, Brazil having height and edifice restrictions that reflect the historic style of the neighborhood. The house is two floors, 2 bedrooms and a private office as well as spaces designed to meet the requirements of the owners.





...



...

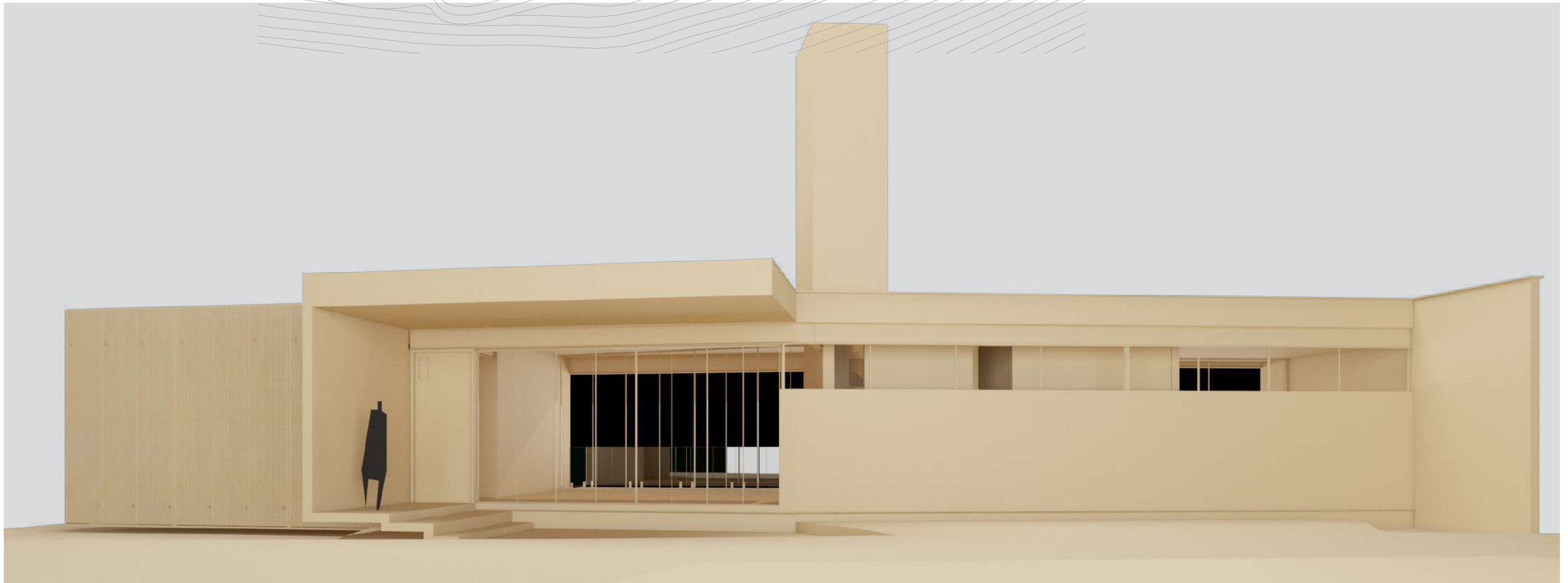
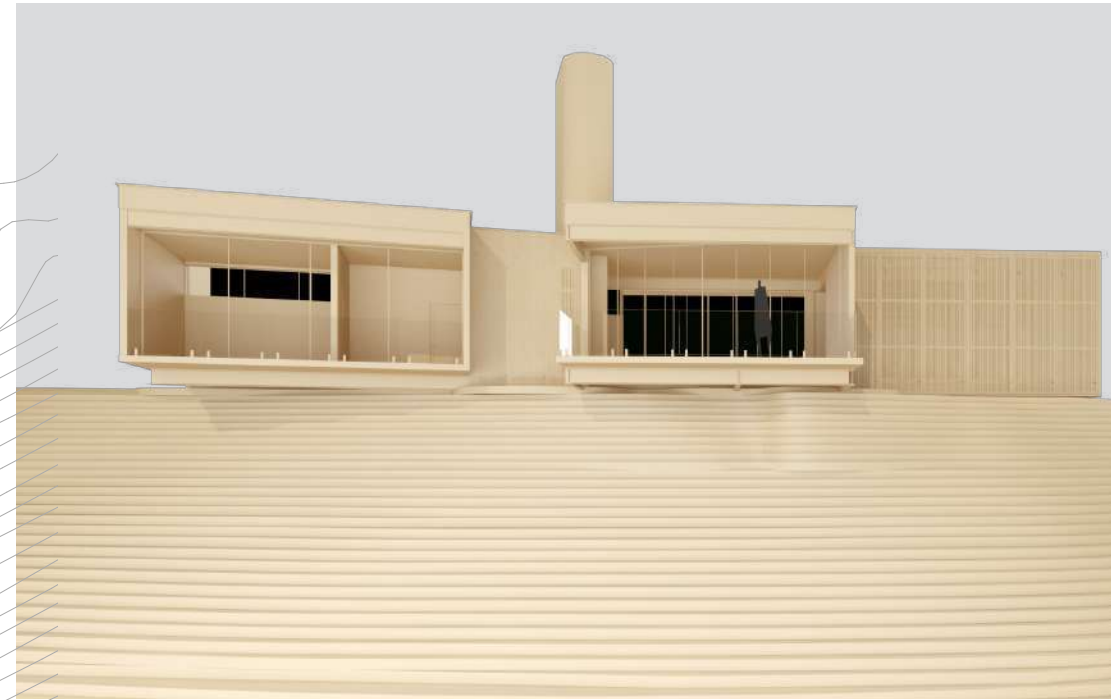
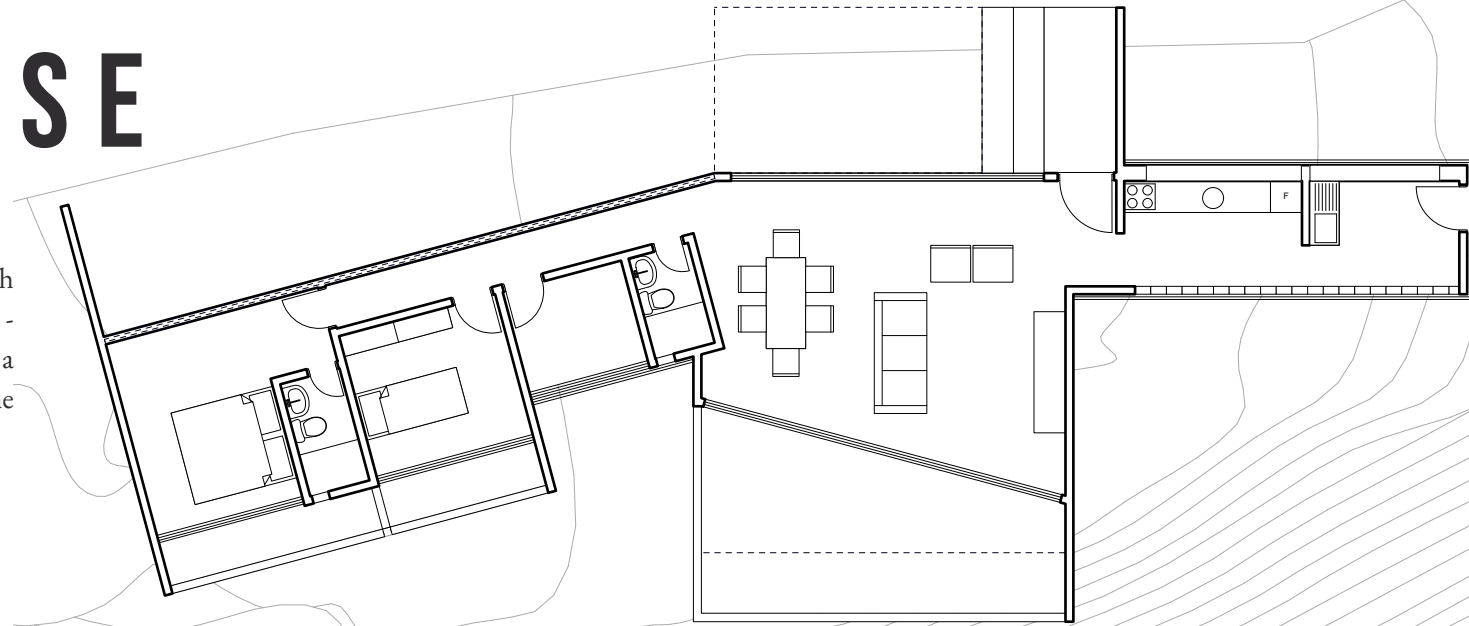
SECTION CUT

Section cut of the the internal components of the house, demonstrating the construction methods and heights of the internal spaces of the house.

HILL HOUSE

HILL HOUSE

Single Family residence with modern influences located in the hills in Recife - Brazil, . The house is one floor, 2 bedrooms and a private office as well as spaces designed to meet the requirements of the owners.



PATIO HOUSE

- JUL

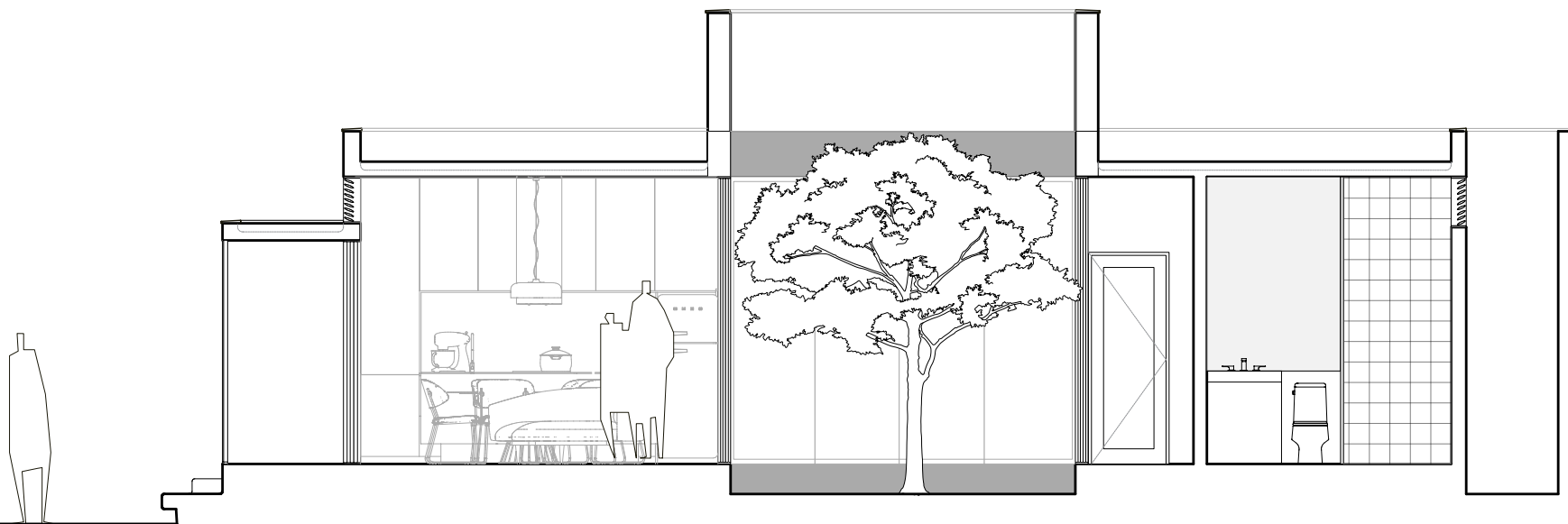
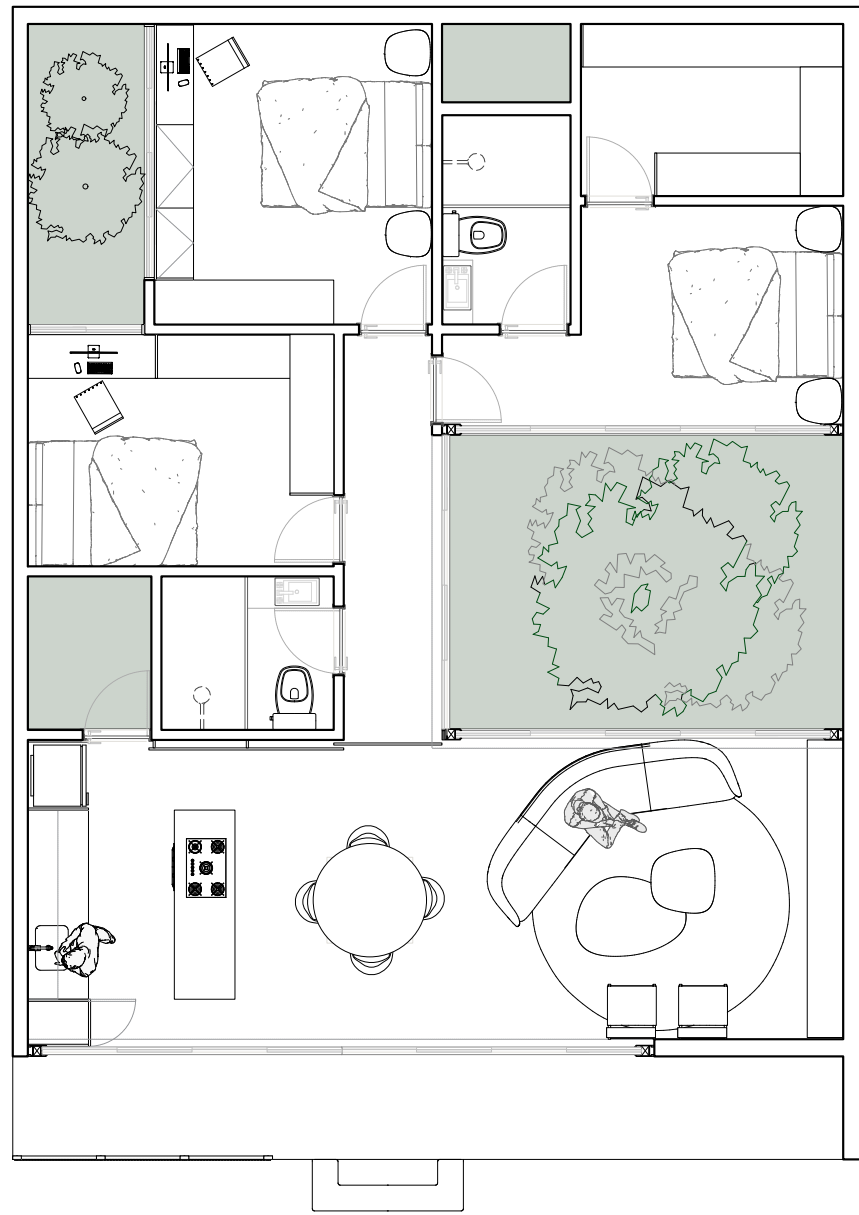
2022

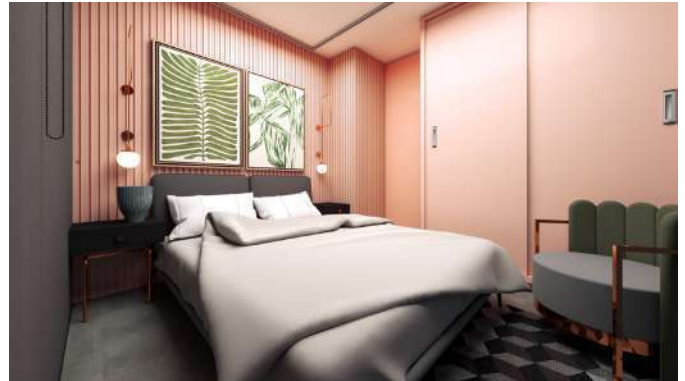
• • •

PATIO HOUSE

Single Family residence located in Recife, with bright colors and tall windows that allows light to get in. Opened to an inside patio, surrounded by vegetation, the spaces of the house integrate a calm environment with the daily urban activities.







HOUSE 03



HOUSE 03

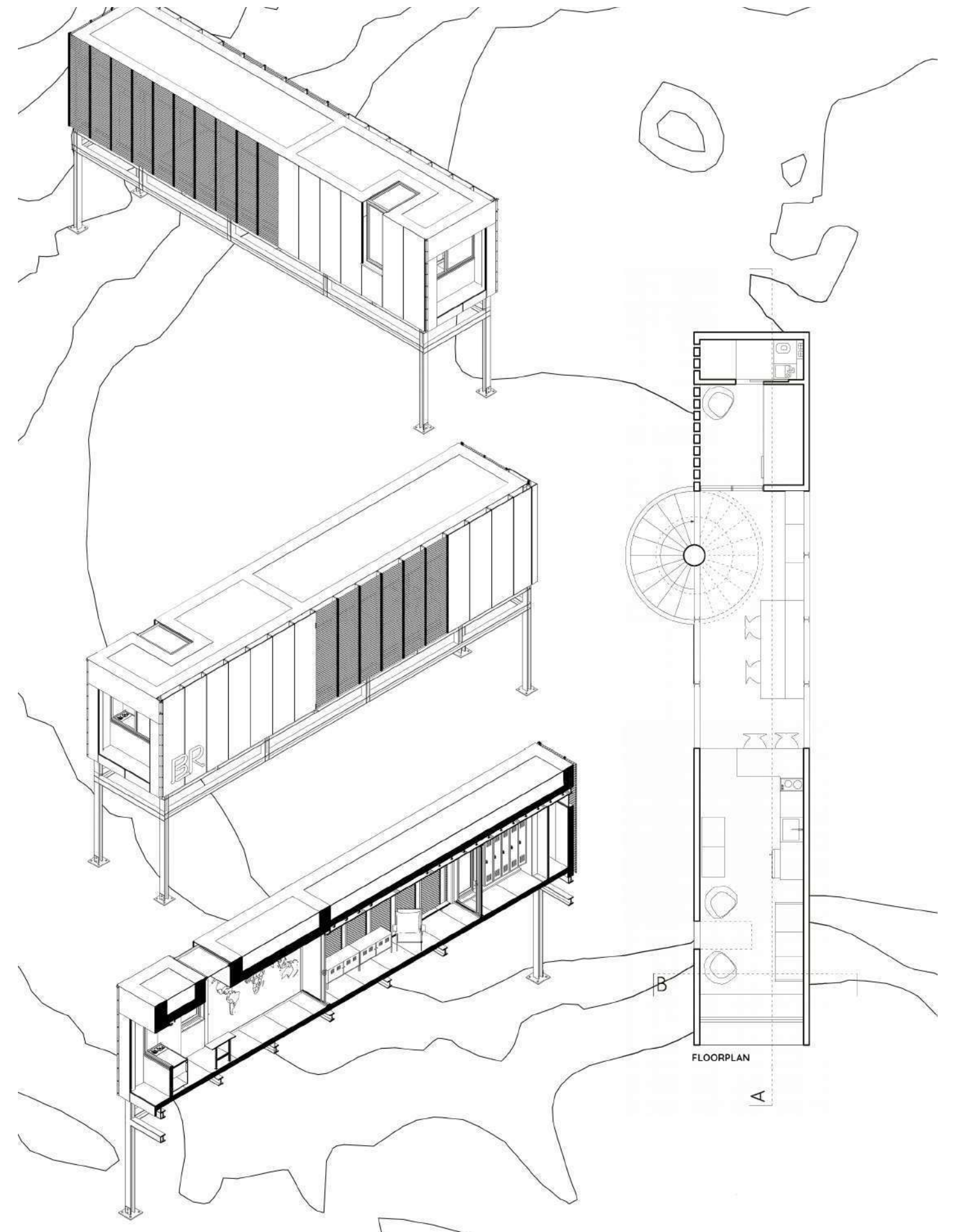
Single family residence, single floor with simpler elements, mixing sophistication and integration with its surrounding environs.

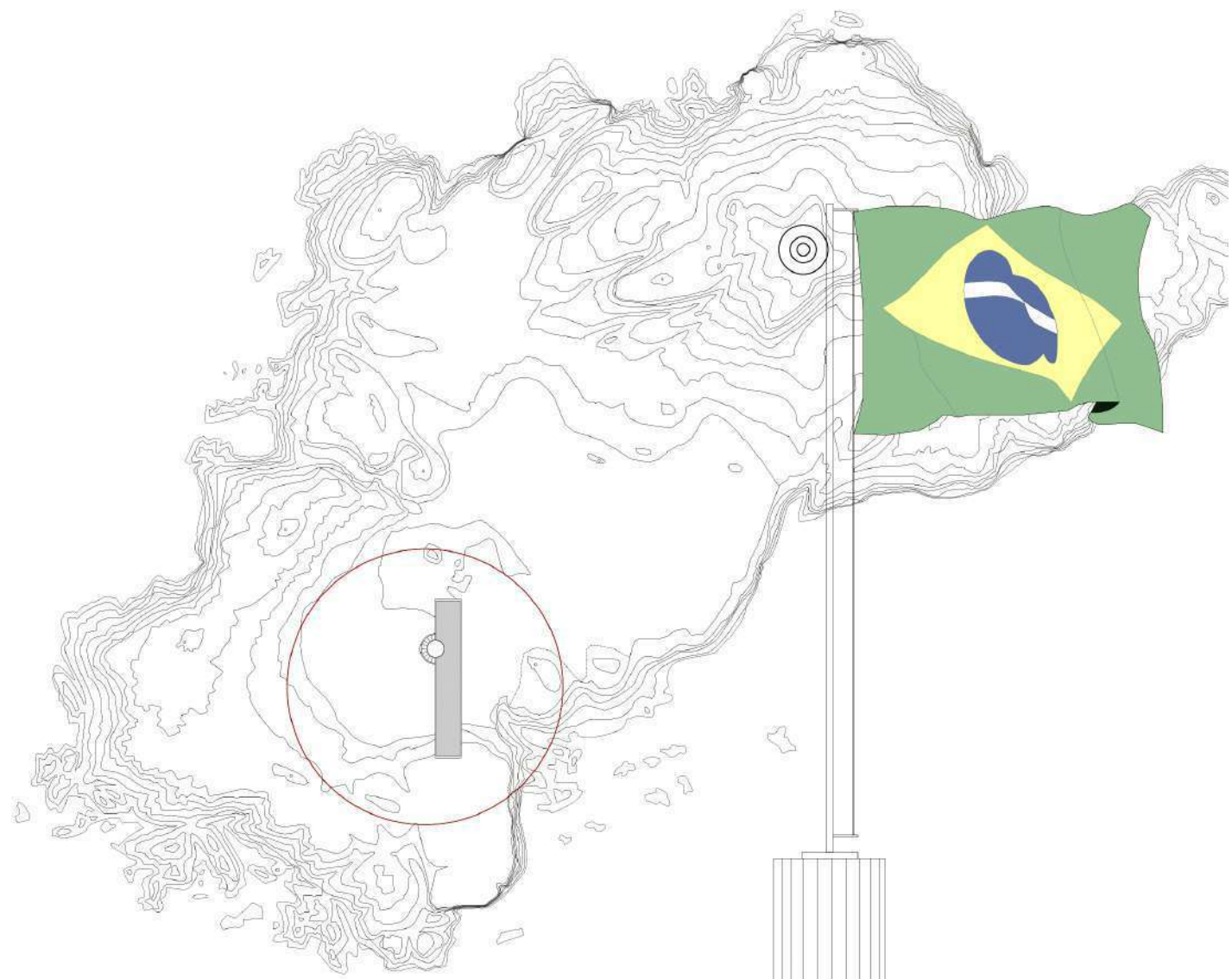
SWEPT AWAY

...

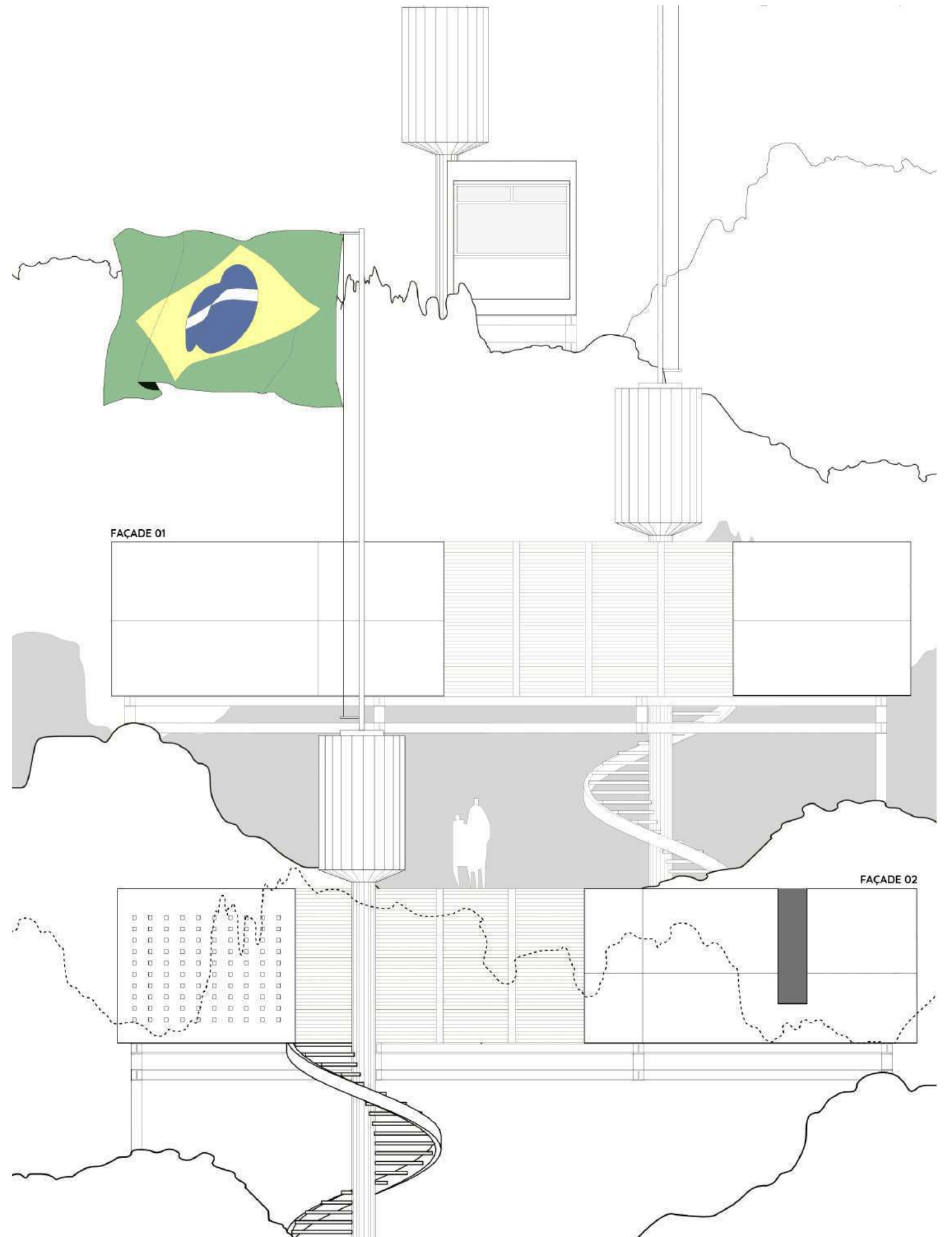
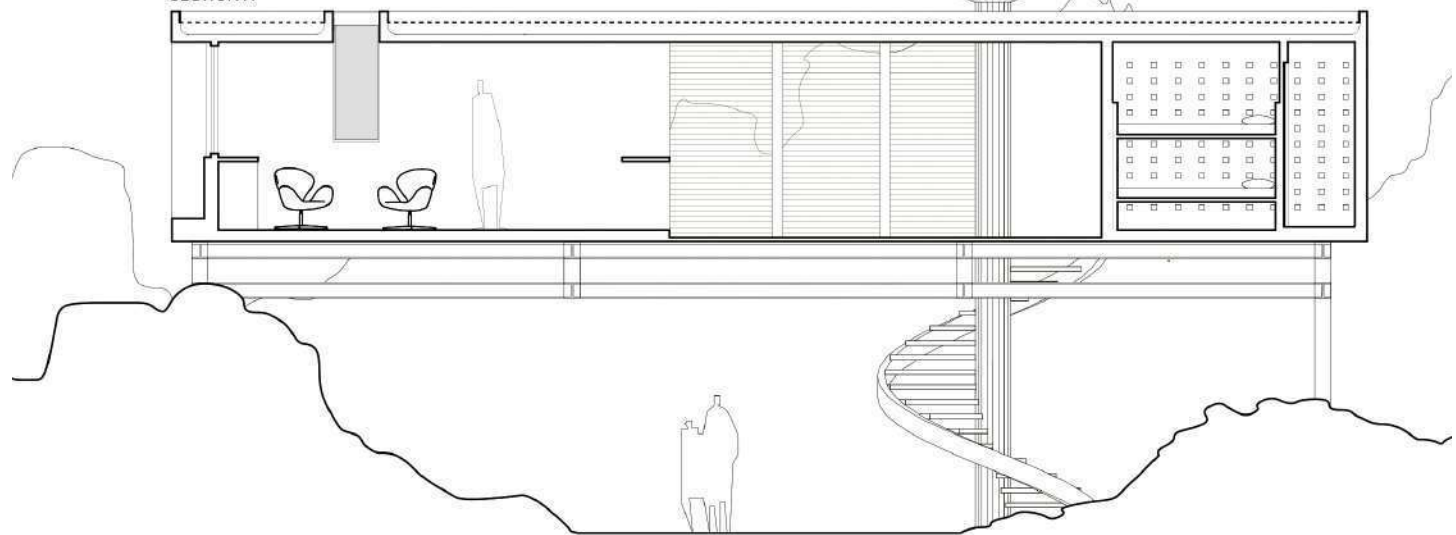
ESTAÇÃO DE PESQUISA NOS PENEDOS DE SÃO PEDRO E SÃO PAULO

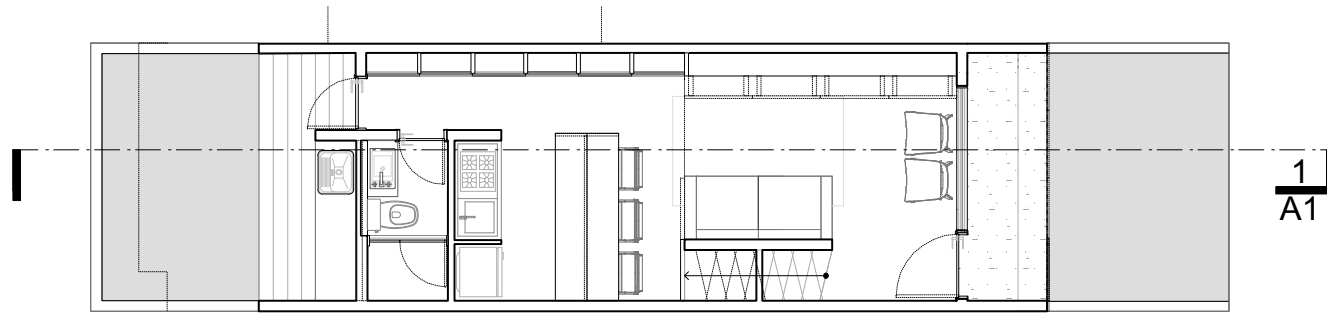
The project is a research facility for the remote islands of Sao Pedro and Sao Paulo located in the middle of the Atlantic Ocean, an inhospitable and difficult to reach location.



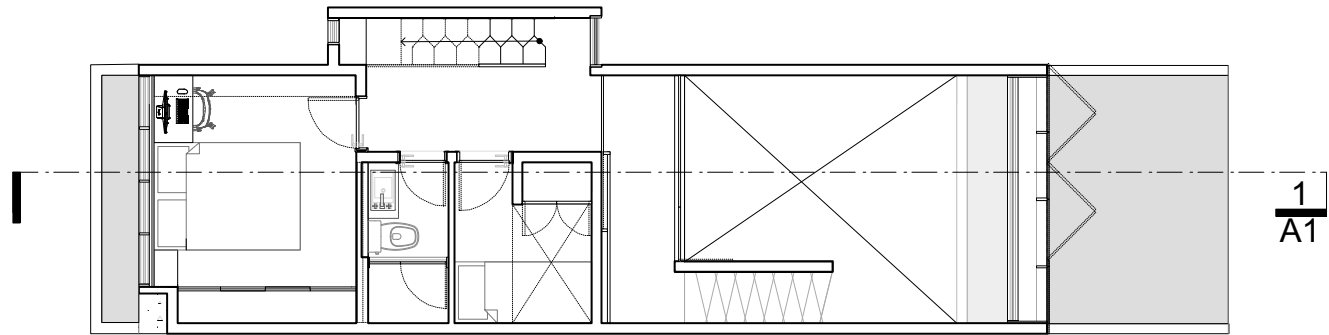


SECTION A

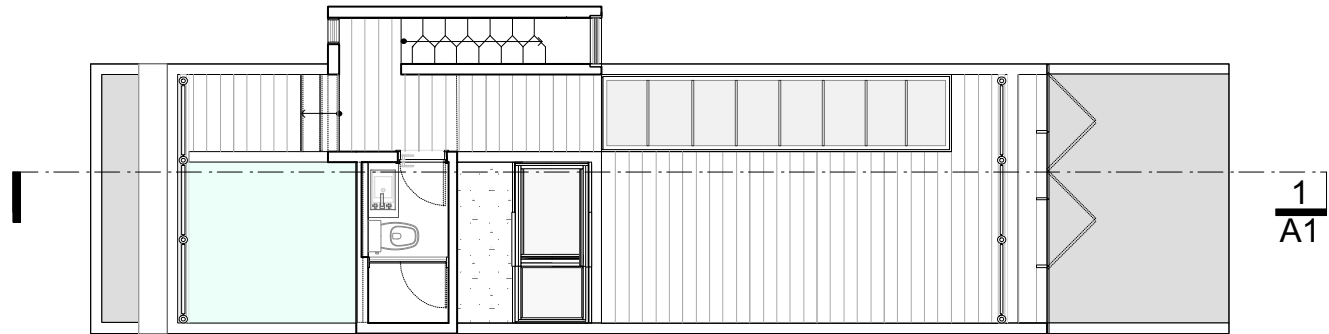




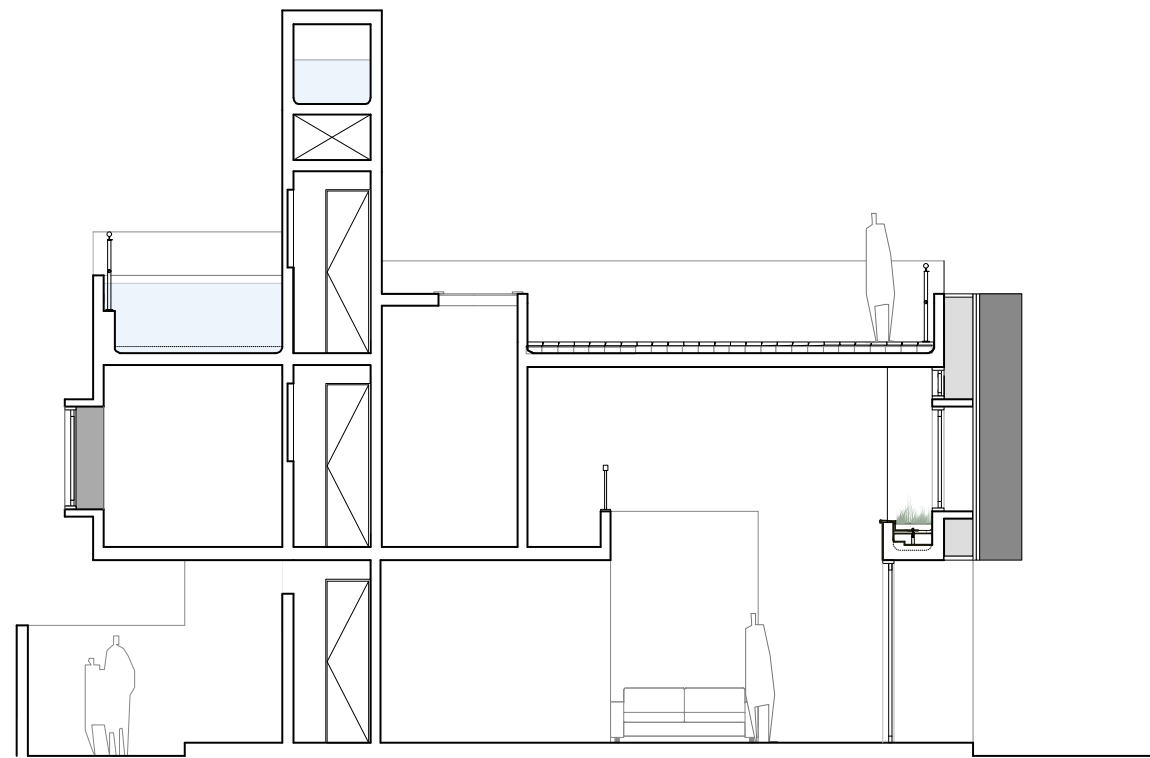
1/A1



1/A1



1/A1



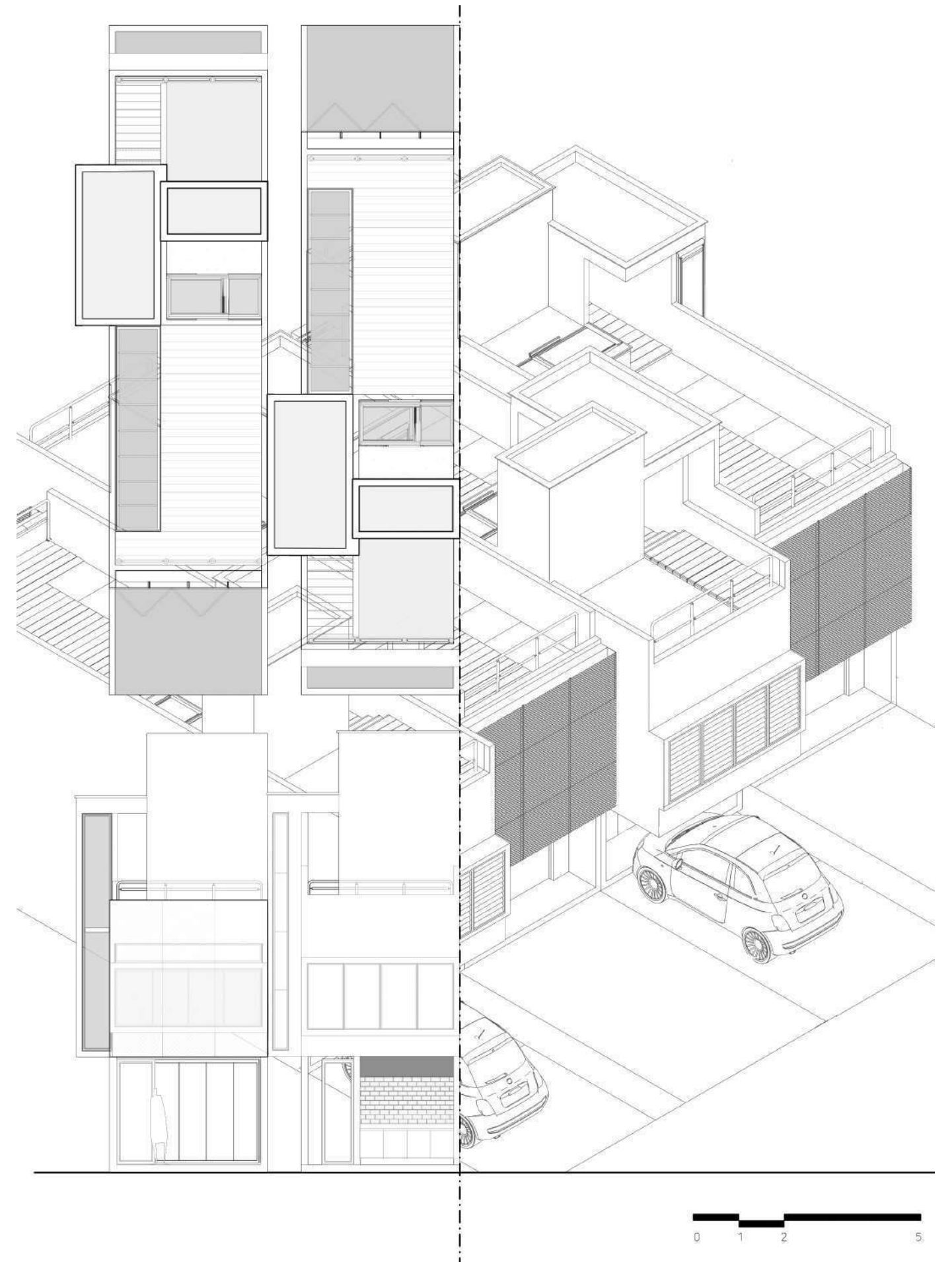
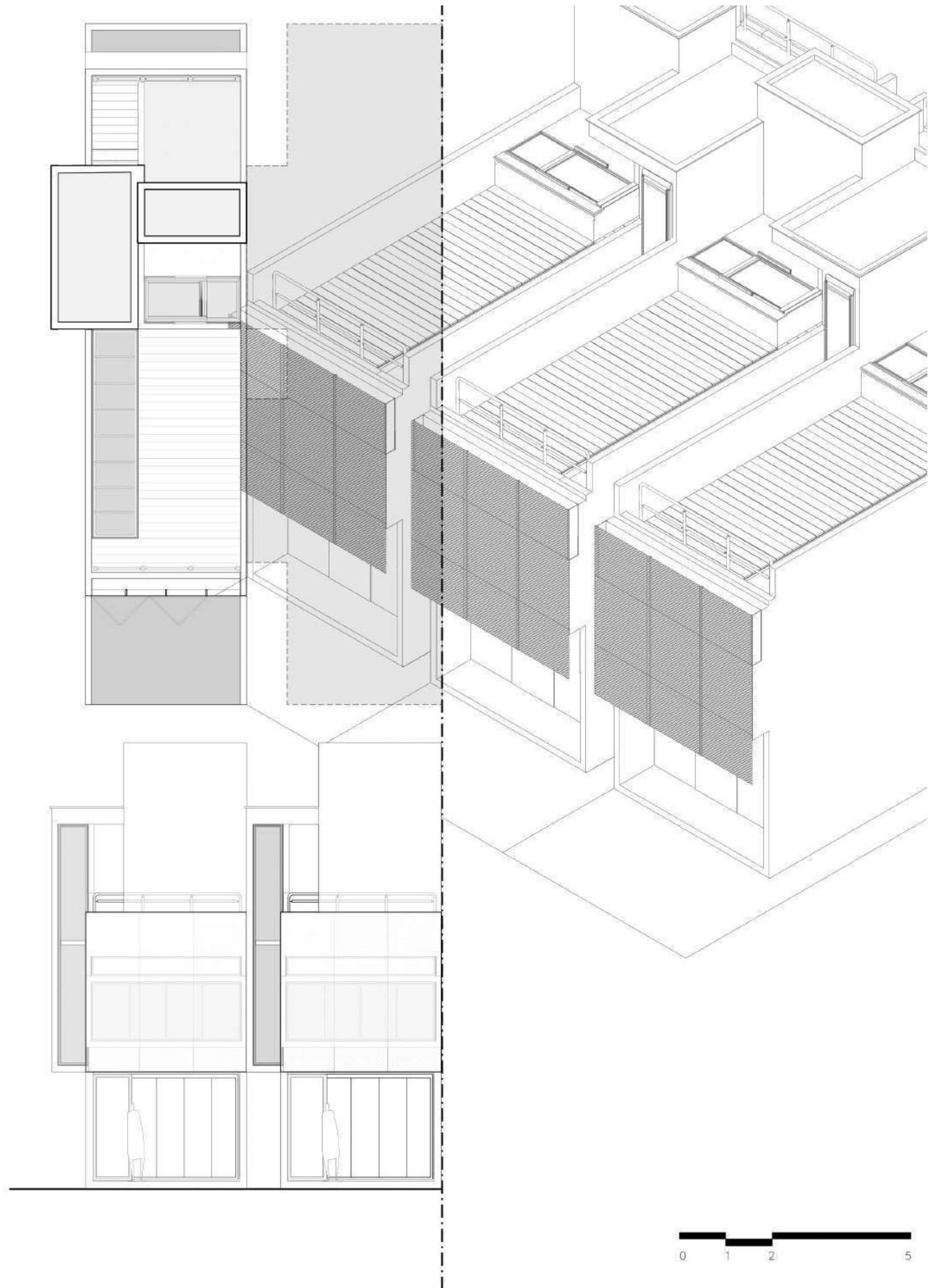
HOUSING

...

HOUSING COMPLEX

Multi-family housing complex based on high density occupation. It consists of separate units, with a mix of common use areas.



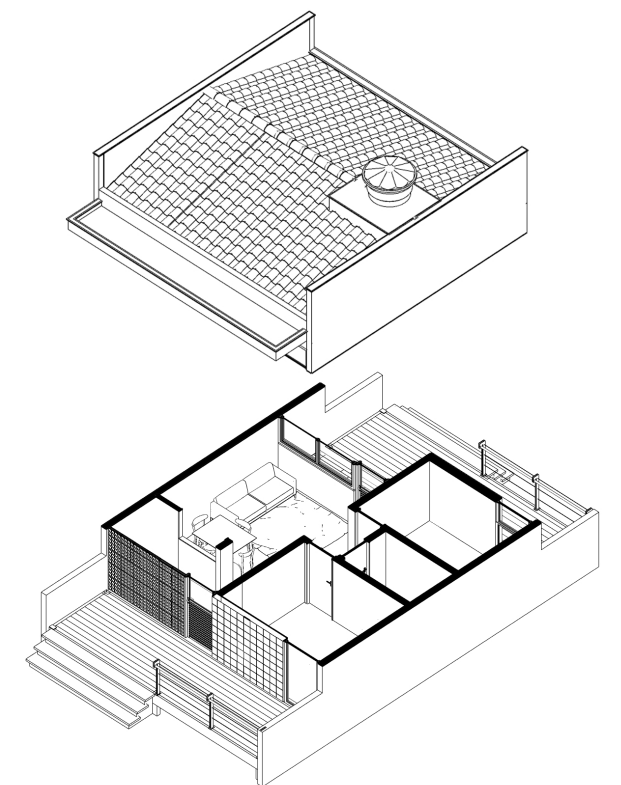
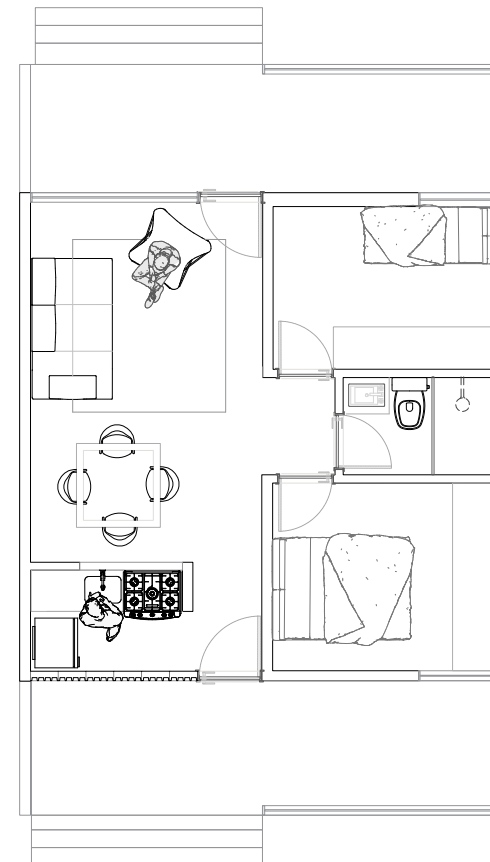
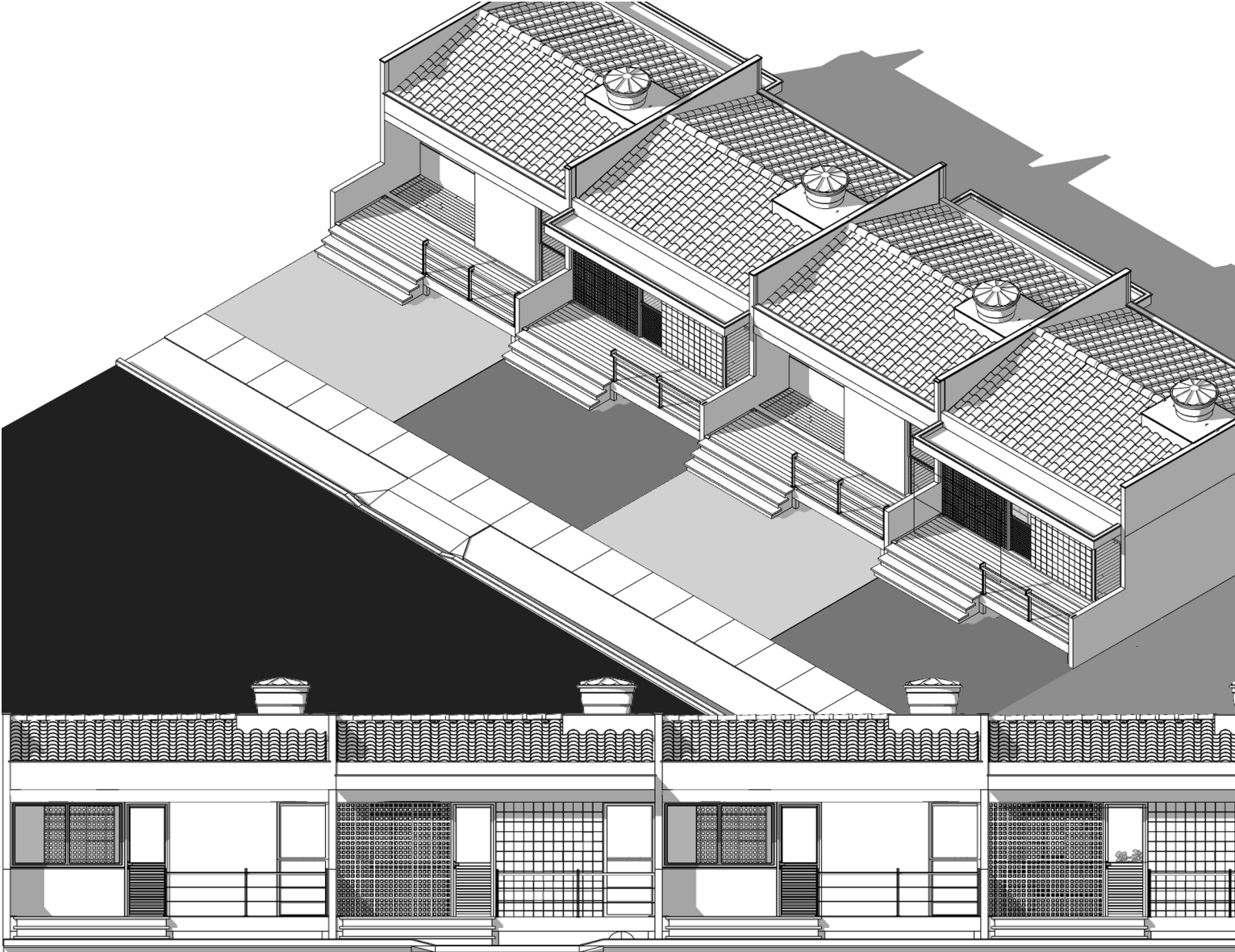


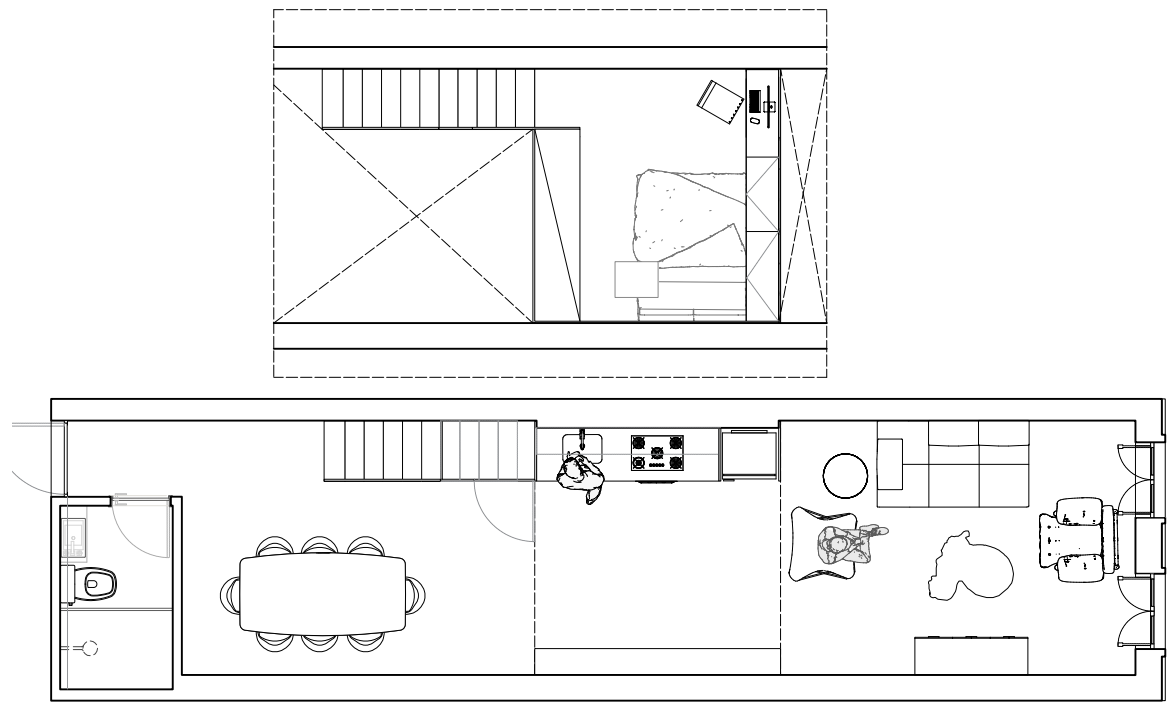
HOUSING

• • •

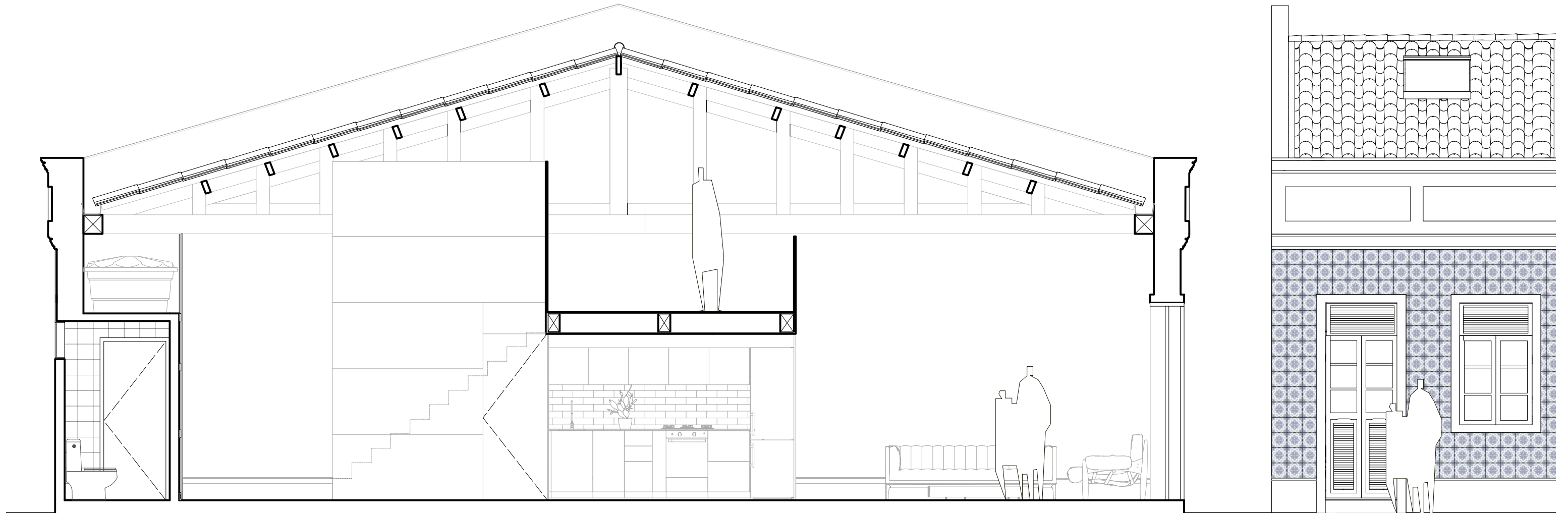
CONDOMINIUM COMPLEX

Multi-family complex based on high-density occupation. It consists of separate units with common use areas.





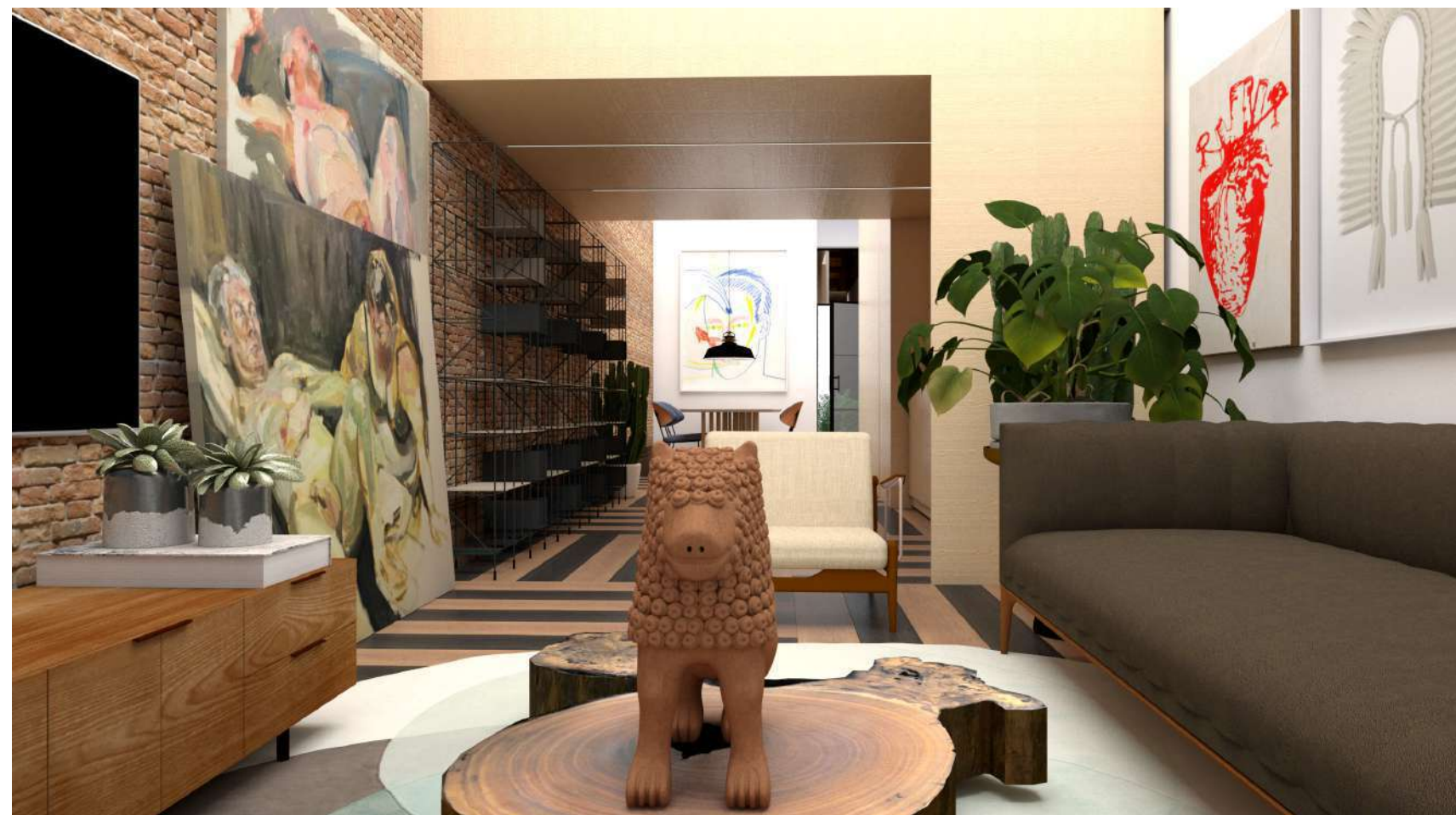
REUSE





HOUSE IN OLINDA

Single unit house located in an historical site in Olinda, UNESCO heritage, protected under the laws of conservation. The project consists in a loft in addition to make sure the house keeps fluidity to the daily day tasks,, ne of the requerimentes of the owner, who desire space to save his art collection as well .



OFFICE BUILDING

