

FIELD REPORT

Project:	Fire Island Lighthouse Testing Prog.	Report #:	2
Inspection Date:	June 10-June 14, 2019	Conditions:	64°F-75°F, Variable
Contractor:	Apple Restoration (Apple)		
Prepared by:	Corey Manchenton	Reviewed By:	Nancy Rankin

Work Overview: Partial removal of concrete shell, non-destructive sample extraction for

Present Onsite: Corey Manchenton (JGWA), Juan and Joseph (Apple), John Bunyan (STRAAM), Naomi Kroll (NPS/HACE), Dennis Mott (NPS), Ken Follett (Apple), David Follett (Apple), Gary Ogden (Atkinson Noland) Osei (Atkinson Noland)

SUMMARY – WEEK 2

In order to keep the vertical location of the work completed clear, the painted “rings” of the lighthouse have been referred to as 1 through 4, starting at the ground level and each of the window landings have been numbered in accordance with interior signage.

June 10th: Weather- Sunny. Apple Restoration began the partial removal of the concrete shell at the lower portion of the Northwest face of the lighthouse. Material was removed at the base, to allow for flat jack testing at the outermost wythe of brick by Atkinson Noland Associates (ANA). The area for removal at 5th floor was located, but could not be completed due to wind from an oncoming storm. Samples for laboratory testing at Highbridge materials have begun to be collected. STRAAM was having connectivity issues with their monitoring system, which were resolved by John Bunyan troubleshooting the issue onsite.

June 11th: Weather- Rainy. Apple Restoration continued the partial removal at the concrete shell at the Northwest face of the lighthouse and Atkinson Noland (ANA) began flat jack testing at the interior of the lighthouse, completing two of the five flat jack tests. Per discussion between OSE/ANA/JGWA, ANA to complete two additional stress tests onsite as a part of their work.

June 12th: Weather- Partly Cloudy, calm winds. Apple Restoration arrived in the early morning to remove the concrete from exterior of the lighthouse at the 5th floor landing for flat jack testing. ANA completed flat jack testing at the exterior of the lighthouse, staying until 9 pm, due to weather due to occur the next day. One stress test was completed at the exterior of the lighthouse at the ground floor. Apple Restoration began removal of the brick samples from the interior of the lighthouse. News 12 Long Island came to the site to record a story for their evening news featuring the work being completed at the lighthouse.

June 13th: Weather- Rainy. Atkinson Noland (ANA) completed flat jack and stress testing at the interior of the lighthouse and Apple Restoration completed removal of the brick samples from

384 Broadway
Albany, NY 12207
518.449.5440 tel
518.449.5828 fax
64 Fulton Street
Suite 402
New York, NY 10038
212.619.4881 tel
212.619.4882 fax
John G. Waite, FAIA
Douglas G. Bucher
Clay S. Palazzo,
AIA, LEED AP
Nancy A. Rankin,
AIA, LEED AP
William J. Brandow
Shannon E. Brown,
AIA
Chelle M. Jenkins
Katherine A. Onufer,
AIA, CDT, CSI
Matthew K. Scheidt,
AIA, LEED AP

the interior of the lighthouse. JGWA/Apple coordinated the schedule for the remainder of the project, pending weather.

June 14th: Weather- Partly Cloudy. Apple Restoration completed the partial removal of the concrete shell at Ring 1 at Northwest of the lighthouse.

384 Broadway
Albany, NY 12207
518.449.5440 tel
518.449.5828 fax

64 Fulton Street
Suite 402
New York, NY 10038
212.619.4881 tel
212.619.4882 fax

OBSERVATIONS/RECOMMENDED ACTIONS

A) Partial Removal at Concrete Shell

- 1) Apple removed the specified concrete shell at the partial removal location at Ring 1, Northwest.
 - a) An area of concrete was immediately removed at the base of Ring 1 for flat jack testing (Photos #1-#2) and then Apple Restoration continued with the destructive probe at the top of Ring 1.
 - (1) The brick masonry behind the concrete shell at the top Ring 1 was damp (Photos #3-#4), while the masonry at the base of the probe was dry.
 - b) Removal of concrete revealed that the exterior wythe of the brick masonry is either directly adhered to the concrete shell and was removed still attached, or is loose, deteriorated, and/or no longer an integral part of the rest of the brick structure. (Photo #5)
 - (1) The outer wythe of the system appears fully independent of the rest of the brick wall structure of the lighthouse and is only comprised of only stretchers, and if brick masonry is removed (whether due to adhesion to the removed concrete shell or otherwise) all brick masonry at the exterior wythe above the removed area has the tendency to fall out.
 - c) Apple removed a 2' x 2' portion of the concrete shell at the west, adjacent to the 5th landing of the lighthouse for flat jack testing. (Photo #8)
 - (1) At least the exterior half of the exterior wythe of the brick masonry was removed with the concrete shell. The remaining portion of the wythe was removed to allow for flat jack testing. (Photo #9)
 - (2) Pressure-treated plywood was mechanically fastened to the face of the lighthouse to cover the removal area. (Photo #10)
 - d) Apple completed the removal of the concrete shell at the large Northwest removal area at ring one (Photo #11)
- 2) **Further removal of the concrete shell will continue to be monitored, particularly in relation to the brick masonry.**

B) Sample Collection

- 1) Samples for the laboratory testing at Highbridge Materials Testing, Inc. have begun to be collected (photos #12-#20).
 - a) Concrete Samples:
 - (1) Two (2) samples, Ring 1, Northwest, ground level and top of ring
 - (2) One (1) sample, Ring 3, West, adjacent to 5th floor landing
 - b) Brick Masonry:
 - (1) One (1) sample, Ring 1, exterior, West, ground level

John G. Waite, FAIA
Douglas G. Bucher
Clay S. Palazzo,
AIA, LEED AP
Nancy A. Rankin,
AIA, LEED AP

William J. Brandow
Shannon E. Brown,
AIA
Chelle M. Jenkins
Katherine A. Onufer,
AIA, CDT, CSI
Matthew K. Scheidt,
AIA, LEED AP

- | | |
|---|---|
| <ul style="list-style-type: none"> (2) One (1) sample, Ring 1, interior, North, ground level (3) One (1) sample, Ring 1, interior, North, Floor 1 (4) One (1) sample, Ring 2, interior, East, between Floors 1/2 (5) Two (2) samples, Ring 3, interior, North, between floors 3/4 (6) One (1) sample, Ring 4, exterior, West, Floor 4 (7) One (1) sample, Ring 4, exterior, West, Floor 1 (8) One (1) sample, Ring 3, interior, North, Floor 4 (9) Two (2) samples, Ring 4, interior, South, Floor 5 (10) Two (2) samples, Gallery level, interior, North (11) One (1) sample, Ring 4, interior, Southwest, Floor 6 (12) One (1) sample, Ring 2, interior, South, between Floors 1/2 (extra salty) | <p>384 Broadway
Albany, NY 12207
518.449.5440 tel
518.449.5828 fax

64 Fulton Street
Suite 402
New York, NY 10038
212.619.4881 tel
212.619.4882 fax</p> |
| <ul style="list-style-type: none"> c) Brick Masonry-Mortar Sandwiches: <ul style="list-style-type: none"> (1) One (1) sample, Ring 1, exterior, West, ground level (2) One (1) sample, Ring 4, exterior West, Floor 5 (3) One (1) sample, Ring 3, interior, North, Floor 4 (4) One (1) sample, Ring 4, interior, Southwest, Floor 7 d) Samples were removed with little to no damage to surrounding masonry. <ul style="list-style-type: none"> (1) All bricks that were removed and are not being utilized for samples are to be re-installed using Type N mortar by Apple. | <p>John G. Waite, FAIA
Douglas G. Bucher
Clay S. Palazzo,
AIA, LEED AP

Nancy A. Rankin,
AIA, LEED AP

William J. Brandow

Shannon E. Brown,
AIA

Chelle M. Jenkins

Katherine A. Onufer,
AIA, CDT, CSI

Matthew K. Scheidt,
AIA, LEED AP</p> |
| <p>C) Atkinson Noland Non-Destructive Testing</p> <ul style="list-style-type: none"> 1) Flat jack and stress testing by ANA has been completed (Photos #21-#35); a report documenting results will be submitted under separate cover. 2) Locations: <ul style="list-style-type: none"> a) All locations are within five (5) feet of the areas shown on the current drawings and were moved due to safe access (not using a ladder on spiral stairs) b) Flat jack testing locations: <ul style="list-style-type: none"> (1) Exterior of Lighthouse, Ring 1, Northwest, at ground level (2) Exterior of Lighthouse, Ring 4, West, adjacent to 5th floor landing window (3) Interior of Lighthouse, Ring 4, West, adjacent to 5th floor landing window (4) Interior of Lighthouse, Ring 3, North, above 4th floor landing window (5) Interior of Lighthouse, Ring 3, East, above 3rd floor landing window c) Stress testing locations <ul style="list-style-type: none"> (1) Exterior of Lighthouse, Ring 1, Northwest, at ground level (2) Interior of Lighthouse, Ring 3, East, above 3rd floor landing window 3) Basic Testing Protocols: <ul style="list-style-type: none"> a) Flat jack testing (ASTM C1197): <ul style="list-style-type: none"> (1) ANA opened the joints at the testing location, temporarily installed the bladders within the joints, attached the testing equipment utilizing temporary methods (hot glue), completed the testing, and removed all equipment (Photos #31- #35) b) In-Situ Stress Testing (ASTM C1196): <ul style="list-style-type: none"> (1) ANA attached markers to the face of the masonry at two separate courses, allowing ANA to measure the distance between them (to the thousandth of an inch), a joint between them is cut and the masonry allow to sag, the distance between them is measured, a flat jack bladder is installed and pressurized, and the distances are measured again, testing is completed, and all equipment is removed. This allows the strength of the pressure needed to move the brick to be measured. | |

ITEMS DISCUSSED

A) News 12 Long Island (June 12)

- 1) News 12 Long Island came to the site to record a story for their evening news featuring the work being completed at the lighthouse. (Photo #36)

B) STRAAM Connectivity (June 10)

- 1) STRAAM was having connectivity issues, which were resolved by John Bunyan troubleshooting the issue onsite. He indicated that no further problems from this particular issue should occur.

C) Scheduling

- 1) JGWA and Apple added three (3) days of work to the schedule to allow for sealant installation.
- 2) Week 3 Projected Schedule
 - a) Monday- Apple on site early morning to finish set-up of scaffold at eastern half of lighthouse. STRAAM on-site at 7 am, Apple to provide access to full exterior of lighthouse (full height) for installation of monitoring equipment and temporary (one day only) testing of equipment.
 - b) Tuesday- Apple to probe void at removed concrete shell area (install shoring ASAP) and take concrete shell and exterior brick samples at east, install plywood over all exterior sample locations
 - c) Wednesday- Apple: Complete probe/sample removal if needed. Build plywood enclosure and shoring for concrete shell removal at first ring. If STRAAM needs additional day to install interior monitoring, it will be this day.
 - d) Thursday- Apple: Complete plywood enclosure.
 - e) Friday- Install sealant at rings
- 3) Week 4:
 - a) Monday- Install sealant at rings
 - b) Tuesday- Install sealant at rings
 - c) Wednesday- Demobilization
 - d) Thursday- Demobilization
 - e) Friday- Demobilization

4) Any comments/questions/concerns pertaining to schedule to be discussed with JGWA ASAP.

D) Site Access by FILPS

- 1) June 14: A FILPS volunteer moved past the interior stanchions and shelves meant to keep the public from the construction area to utilize the back doors to access the exterior construction area, to see if the flag was up, and was stopped by JGWA.
 - a) **FILPS was reminded that it was agreed that no access shall be granted to the construction area due to public safety concerns during the active construction period.**

384 Broadway
Albany, NY 12207
518.449.5440 tel
518.449.5828 fax

64 Fulton Street
Suite 402
New York, NY 10038
212.619.4881 tel
212.619.4882 fax

John G. Waite, FAIA
Douglas G. Bucher

Clay S. Palazzo,
AIA, LEED AP
Nancy A. Rankin,
AIA, LEED AP

William J. Brandow

Shannon E. Brown,
AIA

Chelle M. Jenkins

Katherine A. Onufer,
AIA, CDT, CSI
Matthew K. Scheidt,
AIA, LEED AP

NON-CONFORMING WORK REPORTED THIS DATE TO CONTRACTOR

A) N/A

384 Broadway
Albany, NY 12207
518.449.5440 tel
518.449.5828 fax

64 Fulton Street
Suite 402
New York, NY 10038
212.619.4881 tel
212.619.4882 fax

John G. Waite, FAIA
Douglas G. Bucher
Clay S. Palazzo,
AIA, LEED AP
Nancy A. Rankin,
AIA, LEED AP

William J. Brandow
Shannon E. Brown,
AIA
Chelle M. Jenkins
Katherine A. Onufer,
AIA, CDT, CSI
Matthew K. Scheidt,
AIA, LEED AP

PHOTOGRAPHS:

Photograph #1

June 10:

Lighthouse, West Elevation

Removal of concrete began, utilizing power tools and dust collection when feasible.



384 Broadway
Albany, NY 12207
518.449.5440 tel
518.449.5828 fax

64 Fulton Street
Suite 402
New York, NY 10038
212.619.4881 tel
212.619.4882 fax

John G. Waite, FAIA
Douglas G. Bucher
Clay S. Palazzo,
AIA, LEED AP
Nancy A. Rankin,
AIA, LEED AP

Photograph #2

June 10:

Lighthouse, West Elevation

Removal of concrete revealed that the exterior wythe of the brick masonry is loose, deteriorated, and/or no longer integral with the brick structure directly behind. When brick masonry is removed all brick masonry at the exterior wythe above the removed area has the tendency to fall out.



William J. Brandow
Shannon E. Brown,
AIA
Chelle M. Jenkins
Katherine A. Onufer,
AIA, CDT, CSI
Matthew K. Scheidt,
AIA, LEED AP

Photograph #3

June 10:

Lighthouse, West Elevation at top of Ring 1

Removal of concrete revealed that the exterior wythe of the brick masonry is loose, deteriorated, and/or no longer integral with the brick structure directly behind.



384 Broadway
Albany, NY 12207
518.449.5440 tel
518.449.5828 fax

64 Fulton Street
Suite 402
New York, NY 10038
212.619.4881 tel
212.619.4882 fax

John G. Waite, FAIA
Douglas G. Bucher
Clay S. Palazzo,
AIA, LEED AP
Nancy A. Rankin,
AIA, LEED AP

Photograph #4

June 10:

Lighthouse, West Elevation at top of Ring 1

The exterior wythe of the brick masonry is loose, deteriorated, and/or no longer an integral part of the brick structure directly behind.

The brick masonry and the mortar at this level were both damp. The mortar has the consistency of sand and has limited binder.



William J. Brandow

Shannon E. Brown,
AIA

Chelle M. Jenkins

Katherine A. Onufer,
AIA, CDT, CSI

Matthew K. Scheidt,
AIA, LEED AP

Photograph #5

June 10:

A sample of the concrete shell with brick masonry attached removed from the top of Ring 1, which is a typical condition at the destructive probe.



384 Broadway
Albany, NY 12207
518.449.5440 tel
518.449.5828 fax

64 Fulton Street
Suite 402
New York, NY 10038
212.619.4881 tel
212.619.4882 fax

John G. Waite, FAIA
Douglas G. Bucher
Clay S. Palazzo,
AIA, LEED AP
Nancy A. Rankin,
AIA, LEED AP

Photograph #6

June 10:

Overview of concrete shell removal at the end of the day.



William J. Brandow
Shannon E. Brown,
AIA
Chelle M. Jenkins
Katherine A. Onufer,
AIA, CDT, CSI
Matthew K. Scheidt,
AIA, LEED AP

Photograph #7

June 11:

Overview of concrete removal at the end of the day.



384 Broadway
Albany, NY 12207
518.449.5440 tel
518.449.5828 fax

64 Fulton Street
Suite 402
New York, NY 10038
212.619.4881 tel
212.619.4882 fax

John G. Waite, FAIA
Douglas G. Bucher
Clay S. Palazzo,
AIA, LEED AP
Nancy A. Rankin,
AIA, LEED AP

William J. Brandow
Shannon E. Brown,
AIA

Chelle M. Jenkins
Katherine A. Onufer,
AIA, CDT, CSI
Matthew K. Scheidt,
AIA, LEED AP

Photograph #8

June 11:

Lighthouse, West
Elevation

Overview of the
lighthouse during
concrete shell
removal at the
exterior of the 5th
floor landing for flat
jack testing and
sample collection.



Photograph #9

June 11:

Lighthouse, West Elevation, adjacent to the 5th floor landing's window.

The concrete shell has been removed; the first wythe was partially removed with the concrete shell.



384 Broadway
Albany, NY 12207
518.449.5440 tel
518.449.5828 fax

64 Fulton Street
Suite 402
New York, NY 10038
212.619.4881 tel
212.619.4882 fax

John G. Waite, FAIA
Douglas G. Bucher
Clay S. Palazzo,
AIA, LEED AP
Nancy A. Rankin,
AIA, LEED AP

Photograph #10

June 11:

Lighthouse, West Elevation

A pressure-treated piece of plywood was fastened to the exterior of the concrete shell at the removal location.



William J. Brandow
Shannon E. Brown,
AIA
Chelle M. Jenkins
Katherine A. Onufer,
AIA, CDT, CSI
Matthew K. Scheidt,
AIA, LEED AP

Photograph #11

June 14:

Overview of concrete removal at the end of the day.



384 Broadway
Albany, NY 12207
518.449.5440 tel
518.449.5828 fax

64 Fulton Street
Suite 402
New York, NY 10038
212.619.4881 tel
212.619.4882 fax

John G. Waite, FAIA
Douglas G. Bucher
Clay S. Palazzo,
AIA, LEED AP
Nancy A. Rankin,
AIA, LEED AP

William J. Brandow
Shannon E. Brown,
AIA

Chelle M. Jenkins
Katherine A. Onufer,
AIA, CDT, CSI

Matthew K. Scheidt,
AIA, LEED AP

Photograph #12

June 10:

Brick sample

Apple removed a piece of masonry from the base of the outer wythe. This is one of the most intact samples with a known exterior face.



Photograph #13

June 10:

Brick & mortar sandwich sample

Apple removed a piece of masonry from the base of the outer wythe. This piece of masonry contains a full mortar bed with approximately one inch of brick masonry on either size of the mortar joint.



384 Broadway
Albany, NY 12207
518.449.5440 tel
518.449.5828 fax

64 Fulton Street
Suite 402
New York, NY 10038
212.619.4881 tel
212.619.4882 fax

John G. Waite, FAIA
Douglas G. Bucher
Clay S. Palazzo,
AIA, LEED AP
Nancy A. Rankin,
AIA, LEED AP

Photograph #14

June 10:

Concrete shell sample

Apple removed a piece of cementitious material from the base of the lighthouse at the west side.



William J. Brandow
Shannon E. Brown,
AIA
Chelle M. Jenkins
Katherine A. Onufer,
AIA, CDT, CSI
Matthew K. Scheidt,
AIA, LEED AP

Photograph #15

June 12:

Lighthouse Interior,
Above 5th Floor
Window

Apple began brick
sample collection at
the interior of the
lighthouse, removing
the specified brick
masonry.

All bricks that were
removed and are not
being utilized for
samples are to be re-
installed using Type N
mortar by Apple.



384 Broadway
Albany, NY 12207
518.449.5440 tel
518.449.5828 fax

64 Fulton Street
Suite 402
New York, NY 10038
212.619.4881 tel
212.619.4882 fax

John G. Waite, FAIA
Douglas G. Bucher
Clay S. Palazzo,
AIA, LEED AP
Nancy A. Rankin,
AIA, LEED AP

William J. Brandow
Shannon E. Brown,
AIA

Chelle M. Jenkins
Katherine A. Onufer,
AIA, CDT, CSI
Matthew K. Scheidt,
AIA, LEED AP

Photograph #16

Lighthouse Interior, 1st
floor landing, adjacent
to window.

Area of brick removed
for testing.



Photograph #17

June 12:

Lighthouse Interior

Area of brick removed for testing.



384 Broadway
Albany, NY 12207
518.449.5440 tel
518.449.5828 fax

64 Fulton Street
Suite 402
New York, NY 10038
212.619.4881 tel
212.619.4882 fax

John G. Waite, FAIA
Douglas G. Bucher
Clay S. Palazzo,
AIA, LEED AP
Nancy A. Rankin,
AIA, LEED AP

William J. Brandow
Shannon E. Brown,
AIA

Chelle M. Jenkins

Katherine A. Onufer,
AIA, CDT, CSI

Matthew K. Scheidt,
AIA, LEED AP

Photograph #18

June 12:

Removed brick samples, prior to packing for delivery to Highbridge.



Photograph #19

June 13:

Lighthouse Interior,
Above 5th Floor
Window

Apple continued brick
sample collection at
the interior of the
lighthouse.



384 Broadway
Albany, NY 12207
518.449.5440 tel
518.449.5828 fax

64 Fulton Street
Suite 402
New York, NY 10038
212.619.4881 tel
212.619.4882 fax

John G. Waite, FAIA
Douglas G. Bucher
Clay S. Palazzo,
AIA, LEED AP
Nancy A. Rankin,
AIA, LEED AP

William J. Brandow
Shannon E. Brown,
AIA

Chelle M. Jenkins
Katherine A. Onufer,
AIA, CDT, CSI
Matthew K. Scheidt,
AIA, LEED AP

Photograph #20

June 13:

Removed brick-mortar
sandwich samples,
prior to packing for
delivery to Highbridge



Photograph #21

June 11:

Lighthouse Interior,
Above 3rd Floor
Window

Temporary
Installation of all
equipment for flat
jack testing.



384 Broadway
Albany, NY 12207
518.449.5440 tel
518.449.5828 fax

64 Fulton Street
Suite 402
New York, NY 10038
212.619.4881 tel
212.619.4882 fax

John G. Waite, FAIA
Douglas G. Bucher
Clay S. Palazzo,
AIA, LEED AP
Nancy A. Rankin,
AIA, LEED AP

Photograph #22

June 11:

Lighthouse Interior,
Above 4th Floor
Window

Temporary
Installation of all
equipment for flat
jack testing.



William J. Brandow
Shannon E. Brown,
AIA
Chelle M. Jenkins
Katherine A. Onufer,
AIA, CDT, CSI
Matthew K. Scheidt,
AIA, LEED AP

Photograph #23

June 11:

Lighthouse Interior,
Above 5th Floor
Window

Temporary
Installation of all
equipment for flat
jack testing.



384 Broadway
Albany, NY 12207
518.449.5440 tel
518.449.5828 fax

64 Fulton Street
Suite 402
New York, NY 10038
212.619.4881 tel
212.619.4882 fax

John G. Waite, FAIA
Douglas G. Bucher
Clay S. Palazzo,
AIA, LEED AP
Nancy A. Rankin,
AIA, LEED AP

Photograph #24

June 11:

Lighthouse Interior,
Above 5th Floor
Window

Cracking at brick
masonry during flat
jack testing.



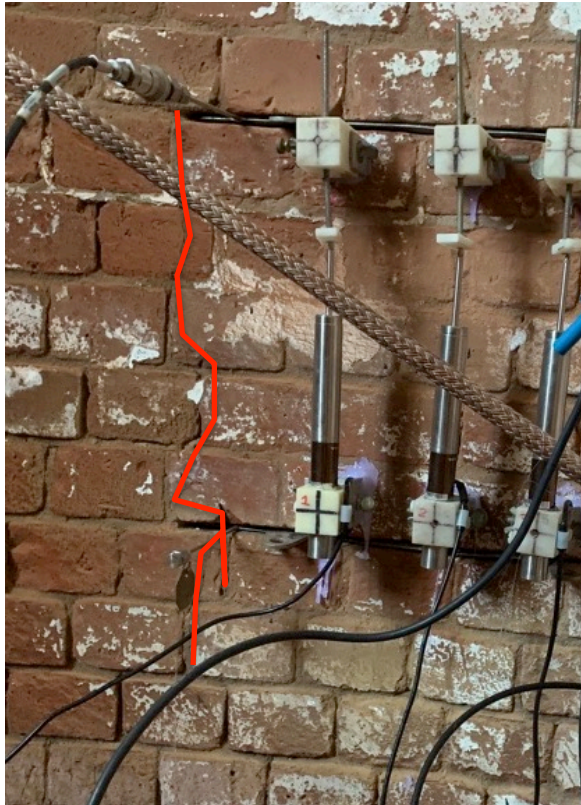
William J. Brandow
Shannon E. Brown,
AIA
Chelle M. Jenkins
Katherine A. Onufer,
AIA, CDT, CSI
Matthew K. Scheidt,
AIA, LEED AP

Photograph #25

June 11:

Lighthouse Interior,
Above 5th Floor
Window

Cracking at brick
masonry during flat
jack testing.



Photograph #26

June 12:

Lighthouse, West
Elevation, adjacent to
the 5th floor landing's
window.

Temporary
Installation of all
equipment for flat
jack testing.



384 Broadway
Albany, NY 12207
518.449.5440 tel
518.449.5828 fax

64 Fulton Street
Suite 402
New York, NY 10038
212.619.4881 tel
212.619.4882 fax

John G. Waite, FAIA
Douglas G. Bucher
Clay S. Palazzo,
AIA, LEED AP
Nancy A. Rankin,
AIA, LEED AP

William J. Brandow
Shannon E. Brown,
AIA

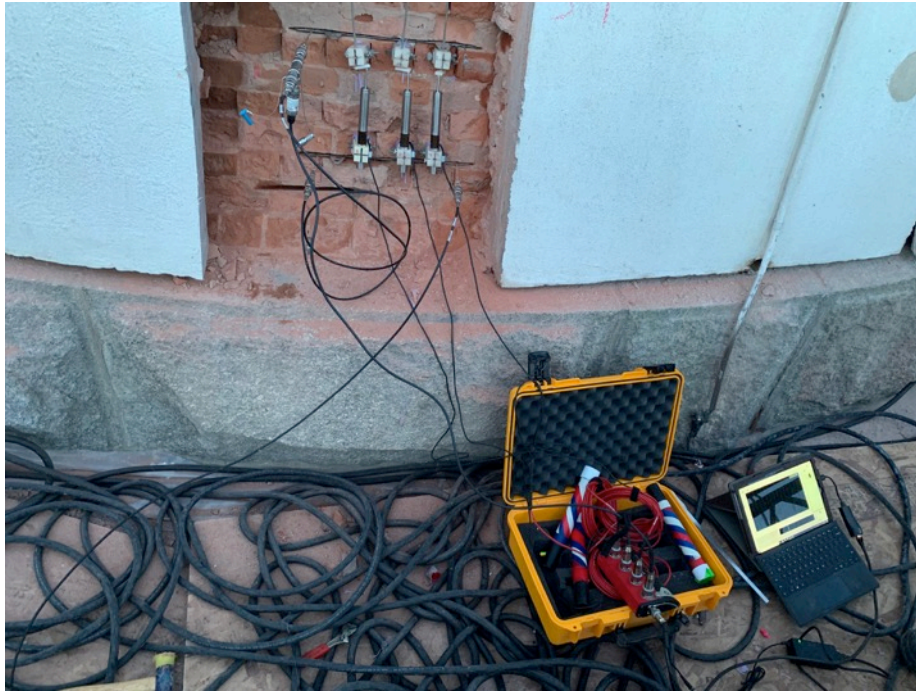
Chelle M. Jenkins
Katherine A. Onufer,
AIA, CDT, CSI
Matthew K. Scheidt,
AIA, LEED AP

Photograph #27

June 12:

Lighthouse, West Elevation, ground level

Temporary Installation of all equipment for flat jack testing.



384 Broadway
Albany, NY 12207
518.449.5440 tel
518.449.5828 fax

64 Fulton Street
Suite 402
New York, NY 10038
212.619.4881 tel
212.619.4882 fax

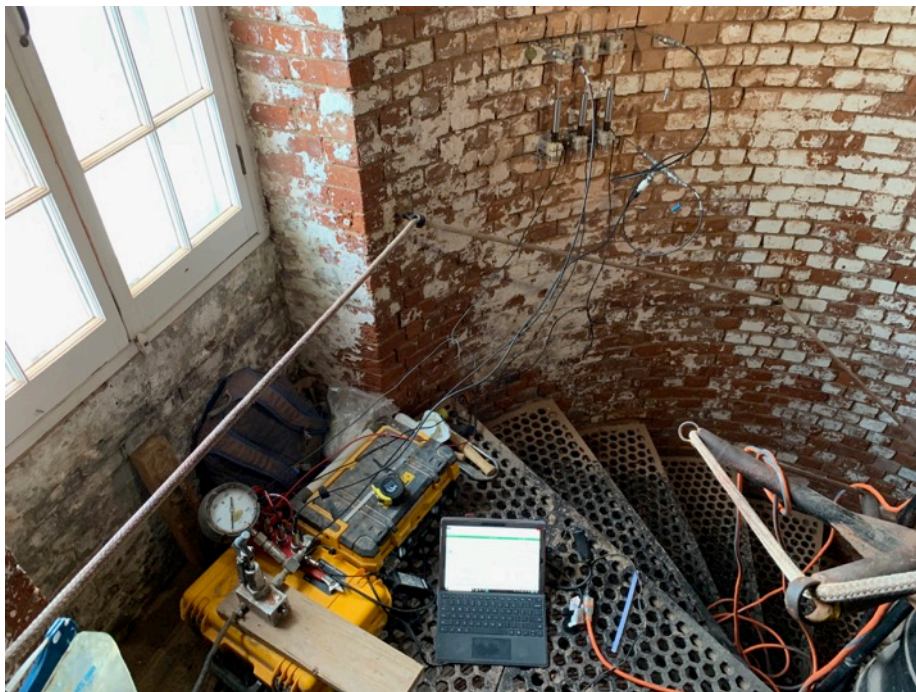
John G. Waite, FAIA
Douglas G. Bucher
Clay S. Palazzo,
AIA, LEED AP
Nancy A. Rankin,
AIA, LEED AP

Photograph #28

June 13:

Lighthouse, West Elevation, adjacent to the 5th floor landing's window.

Temporary Installation of all equipment for flat jack testing.



William J. Brandow
Shannon E. Brown,
AIA
Chelle M. Jenkins
Katherine A. Onufer,
AIA, CDT, CSI
Matthew K. Scheidt,
AIA, LEED AP

Photograph #29

June 12:

Lighthouse, West
Elevation, ground
level

Temporary
Installation of all
equipment for stress
testing.



384 Broadway
Albany, NY 12207
518.449.5440 tel
518.449.5828 fax

64 Fulton Street
Suite 402
New York, NY 10038
212.619.4881 tel
212.619.4882 fax

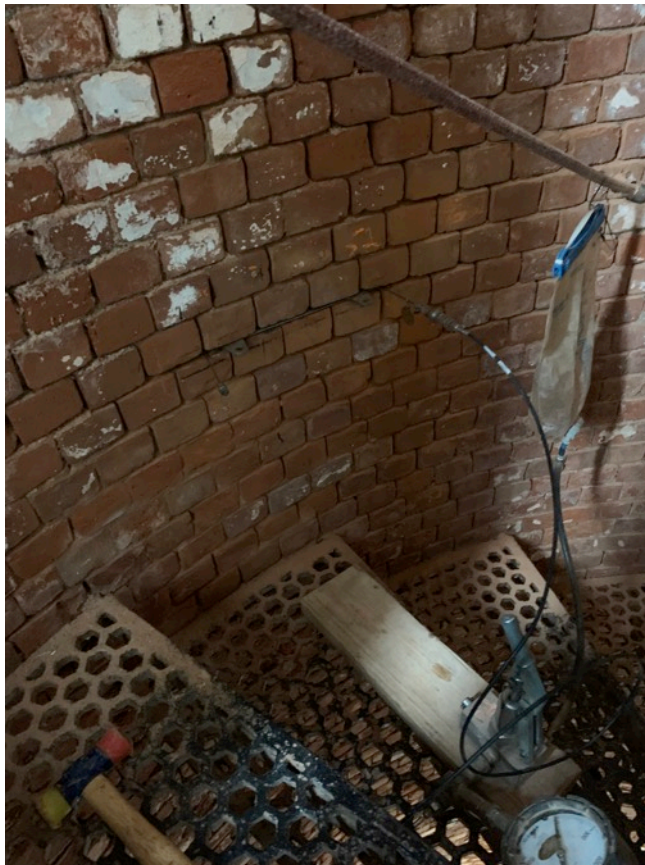
John G. Waite, FAIA
Douglas G. Bucher
Clay S. Palazzo,
AIA, LEED AP
Nancy A. Rankin,
AIA, LEED AP

Photograph #30

June 13:

Lighthouse Interior,
Above 3rd Floor
Window

Temporary
Installation of all
equipment for stress
testing.



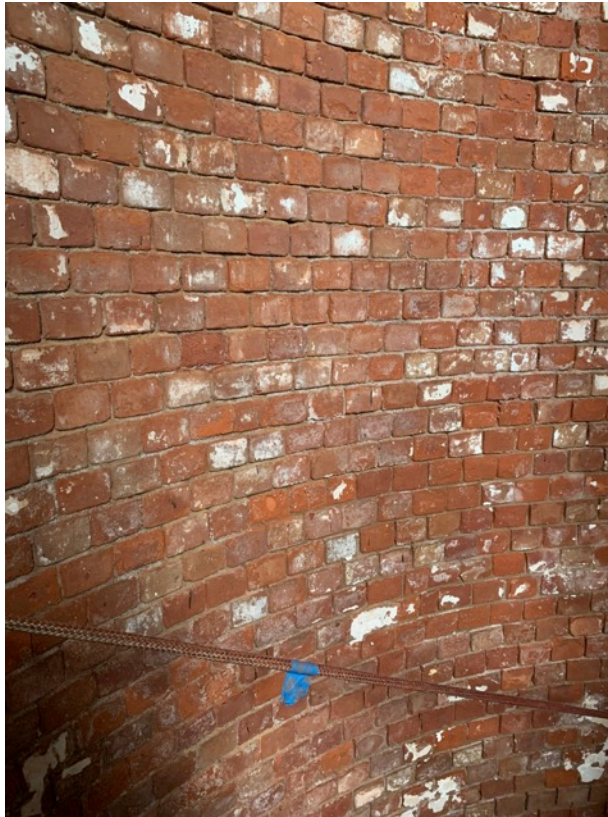
William J. Brandow
Shannon E. Brown,
AIA
Chelle M. Jenkins
Katherine A. Onufer,
AIA, CDT, CSI
Matthew K. Scheidt,
AIA, LEED AP

Photograph #31

June 11:

Lighthouse Interior,
Above 4th Floor
Window

Area for flat jack
testing prior to cutting
of joints/testing.



384 Broadway
Albany, NY 12207
518.449.5440 tel
518.449.5828 fax

64 Fulton Street
Suite 402
New York, NY 10038
212.619.4881 tel
212.619.4882 fax

John G. Waite, FAIA
Douglas G. Bucher
Clay S. Palazzo,
AIA, LEED AP
Nancy A. Rankin,
AIA, LEED AP

William J. Brandow
Shannon E. Brown,
AIA

Chelle M. Jenkins
Katherine A. Onufer,
AIA, CDT, CSI
Matthew K. Scheidt,
AIA, LEED AP

Photograph #32

June 11:

Lighthouse Interior,
Above 4th Floor
Window

Removal of mortar
from joints using the
Arbortech machine.



Photograph #33

June 11:

Lighthouse Interior,
Above 4th Floor
Window

Installation of metal
bladders in joints five
(5) joints apart.

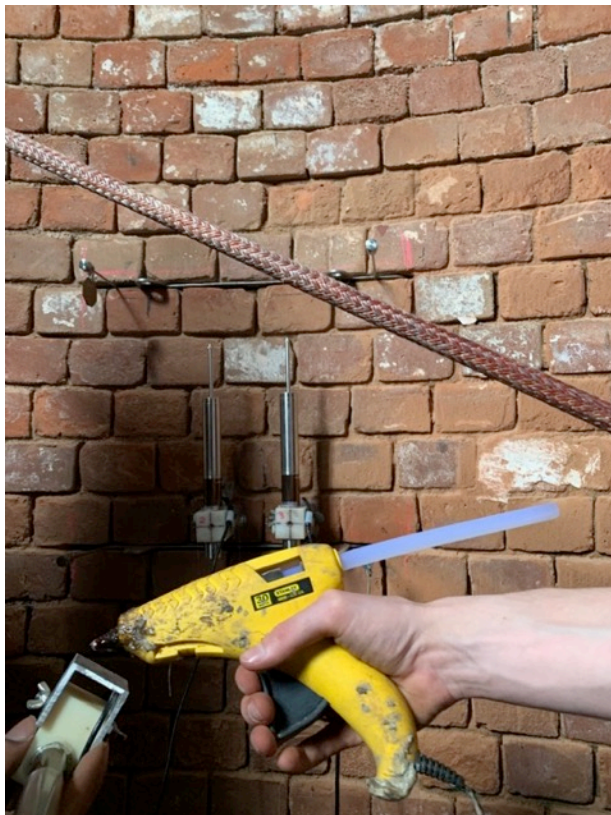


Photograph #34

June 11:

Lighthouse Interior,
Above 4th Floor
Window

Temporary
attachment of testing
equipment to interior
of lighthouse masonry
wall utilizing hot glue.



384 Broadway
Albany, NY 12207
518.449.5440 tel
518.449.5828 fax

64 Fulton Street
Suite 402
New York, NY 10038
212.619.4881 tel
212.619.4882 fax

John G. Waite, FAIA
Douglas G. Bucher
Clay S. Palazzo,
AIA, LEED AP
Nancy A. Rankin,
AIA, LEED AP

William J. Brandow

Shannon E. Brown,
AIA

Chelle M. Jenkins

Katherine A. Onufer,
AIA, CDT, CSI

Matthew K. Scheidt,
AIA, LEED AP

Photograph #35

June 11:

Lighthouse Interior,
Above 4th Floor
Window

Temporary
Installation of all
equipment for flat
jack testing.



384 Broadway
Albany, NY 12207
518.449.5440 tel
518.449.5828 fax

64 Fulton Street
Suite 402
New York, NY 10038
212.619.4881 tel
212.619.4882 fax

John G. Waite, FAIA
Douglas G. Bucher
Clay S. Palazzo,
AIA, LEED AP
Nancy A. Rankin,
AIA, LEED AP

Photograph #36

June 12:

News 12 Long Island
came to the site to
record a story for
their evening news
featuring the work
being completed at
the lighthouse.



William J. Brandow
Shannon E. Brown,
AIA
Chelle M. Jenkins
Katherine A. Onufer,
AIA, CDT, CSI
Matthew K. Scheidt,
AIA, LEED AP

Photograph #37

June 11:

Overview of the lighthouse and keeper's house during construction.



384 Broadway
Albany, NY 12207
518.449.5440 tel
518.449.5828 fax

64 Fulton Street
Suite 402
New York, NY 10038
212.619.4881 tel
212.619.4882 fax

John G. Waite, FAIA
Douglas G. Bucher
Clay S. Palazzo,
AIA, LEED AP
Nancy A. Rankin,
AIA, LEED AP

William J. Brandow

Shannon E. Brown,
AIA

Chelle M. Jenkins

Katherine A. Onufer,
AIA, CDT, CSI

Matthew K. Scheidt,
AIA, LEED AP

Photograph #38

June 11:

Overview of Apple Restoration and ANA at the exterior of the 5th floor landing.



384 Broadway
Albany, NY 12207
518.449.5440 tel
518.449.5828 fax

64 Fulton Street
Suite 402
New York, NY 10038
212.619.4881 tel
212.619.4882 fax

John G. Waite, FAIA
Douglas G. Bucher
Clay S. Palazzo,
AIA, LEED AP
Nancy A. Rankin,
AIA, LEED AP

William J. Brandow
Shannon E. Brown,
AIA
Chelle M. Jenkins
Katherine A. Onufer,
AIA, CDT, CSI
Matthew K. Scheidt,
AIA, LEED AP