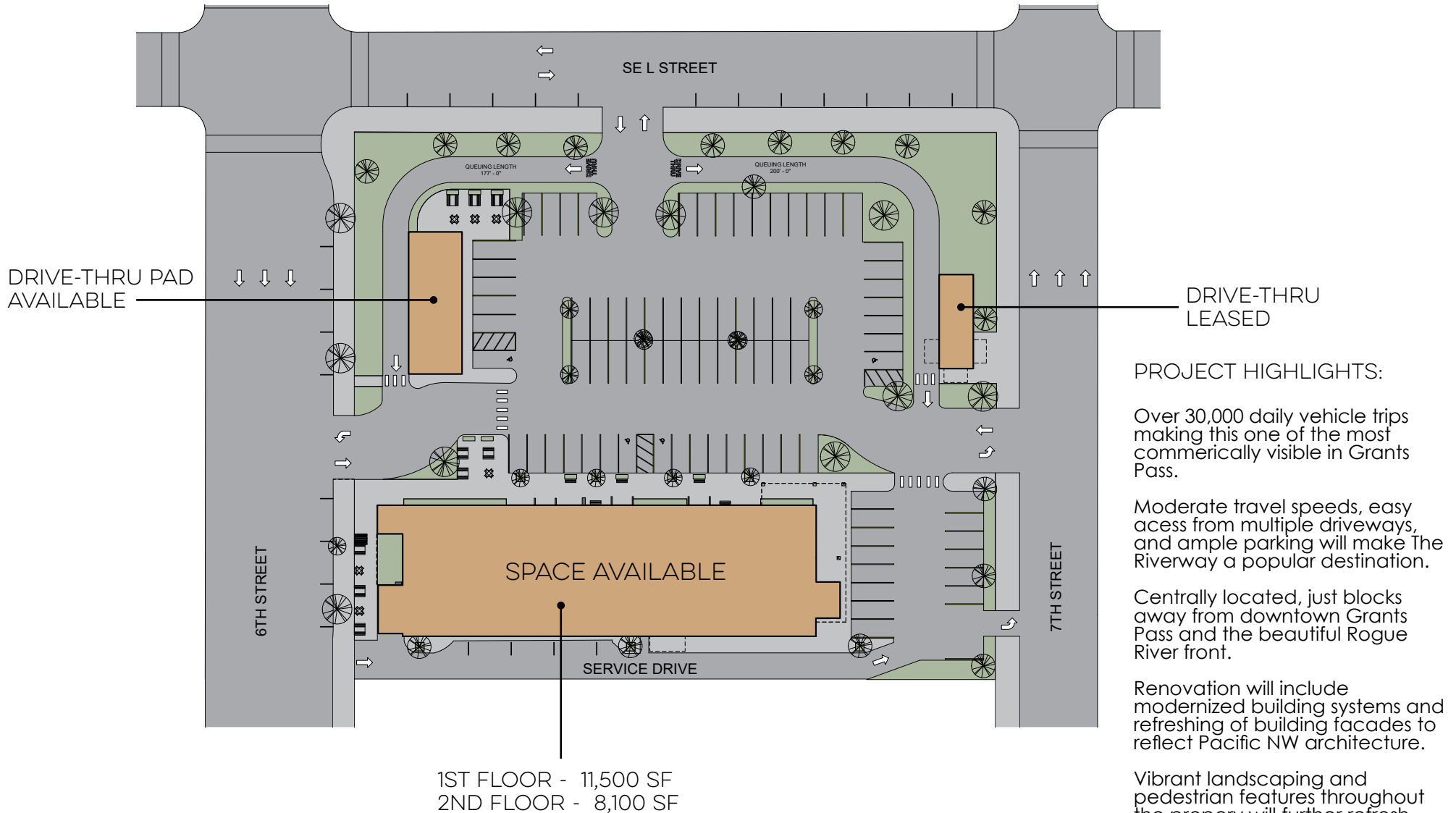


THE RIVERWAY | 735 SE 6TH STREET

COMMERICAL REDEVELOPMENT IN THE HEART OF GRANTS PASS



PROJECT HIGHLIGHTS:

Over 30,000 daily vehicle trips making this one of the most commercially visible in Grants Pass.

Moderate travel speeds, easy access from multiple driveways, and ample parking will make The Riverway a popular destination.

Centrally located, just blocks away from downtown Grants Pass and the beautiful Rogue River front.

Renovation will include modernized building systems and refreshing of building facades to reflect Pacific NW architecture.

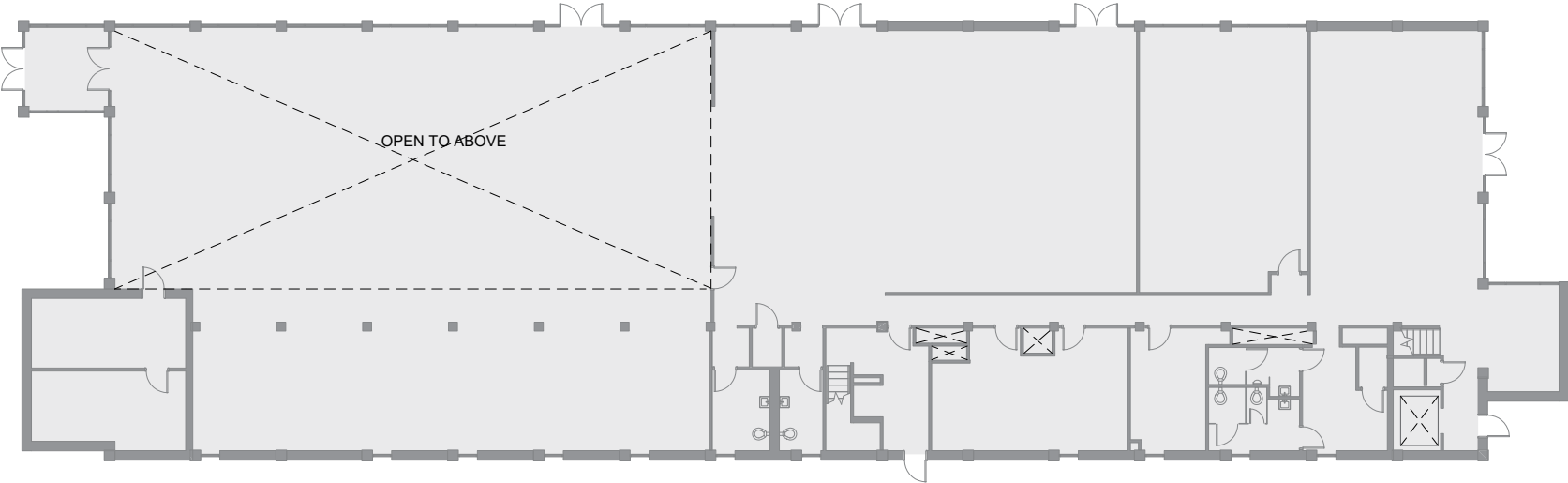
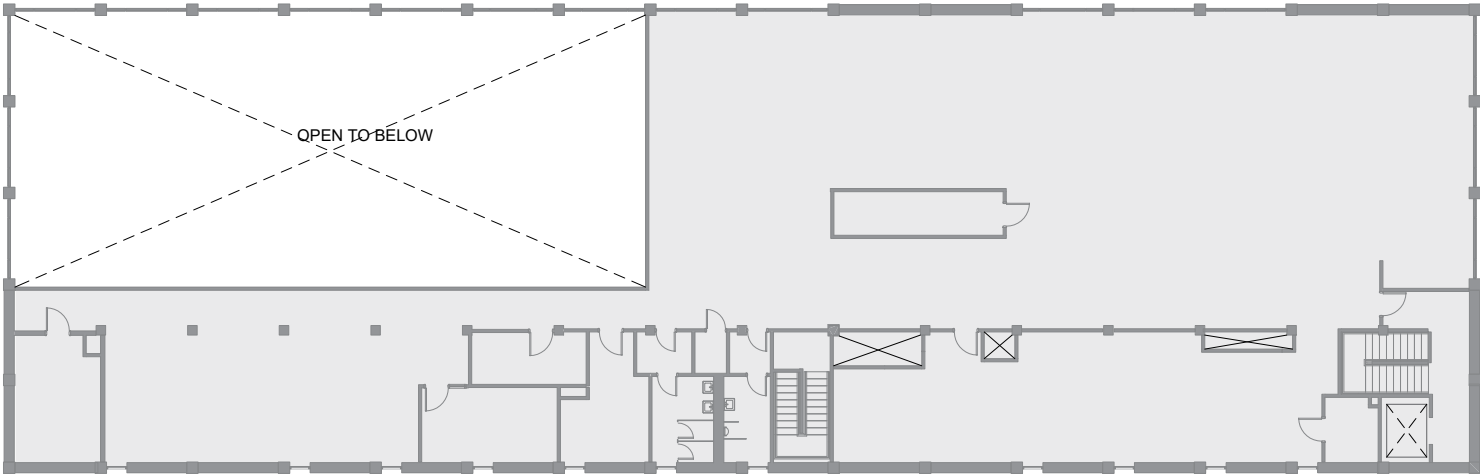
Vibrant landscaping and pedestrian features throughout the property will further refresh and update The Riverway.

THE RIVERWAY | 735 SE 6TH STREET

COMMERICAL REDEVELOPMENT IN THE HEART OF GRANTS PASS



AUSLAND
GROUP



THE RIVERWAY | 735 SE 6TH STREET

COMMERICAL REDEVELOPMENT IN THE HEART OF GRANTS PASS



AUSLAND
GROUP

