

- CONSTRUCTION PLAN LEGEND**
- VIEWING DEVICE AT ENTRY DOORS TO GUEST ROOMS, TYPICAL. ALL ENTRY DOORS TO BE SELF CLOSING. SEE DOOR SCHEDULE FOR DETAILS ON DWG. A-600.
 - ALL FINISHES AT CORRIDOR TO BE CLASS "B", REFER TO FINISH SCHEDULE.
 - DISPLAY OF PRINTED FLOOR PLAN WITH ALL MEANS OF EGRESS SHOWN & LABELED.
 - TACTILE SIGN INDICATING EXIT COMPLYING W/ ANS I 117.1 AT EACH STAIR.
 - TACTILE SIGNAGE, AUDIO-VISUAL INDICATORS, SIGN OF LIFE, AND ADDITIONAL ITEMS AT ELEVATOR ENTRY, TYP. FOR EACH FLOOR. REFER TO ELEVATOR DETAILS.
 - STAIR FLOOR NUMBER AND IDENTIFICATION SIGNS AS PER BC 1019.1.7 TYP. STAIRWAY IDENTIFICATION SIGNS SHALL BE PROVIDED ON BOTH SIDES OF EACH STAIR DOOR.
 - COMPACTOR BY "HARMONY ENTERPRISES", MODEL 450SS.
 - HOSE BIB PER CODE. SEE PLUMBING DRAWINGS.
 - PIT LADDER AND LIGHTING CONTROL. AT ELEVATOR PIT, REFER TO ELEVATOR PLANS AND DETAILS FOR ADDITIONAL NOTES.
 - ELEVATOR SUMP PUMP. REFER TO PLUMBING AND ELECTRICAL.
 - 6" ROOF DRAIN. SEE DETAILS. SLOPE ROOFING TO DRAIN, TYP THROUGHOUT ROOF.
 - 4" OVERFLOW DRAIN. PITCH ROOFING TO DRAIN, TYP. THROUGHOUT ROOFING.
 - ROOF SCUPPER, PITCH ROOFING TO SCUPPER, TYP THROUGHOUT ROOF.
 - ROOF DRAIN AND LEADER DOWN.
 - SPLASH BLOCK.
 - THERMAL ENTRY DOOR. SEE DOOR SCHEDULE.
 - ICE MAKER BY MANTOWIS, MODEL SPA160, SEE PLUMBING.
 - FROSTED TEMPERED GLASS PARTITION..
 - ALUMINUM CANOPY.
 - RECESSED FIRE EXTINGUISHER CABINET, MODEL 2720R BY LARSEN OR SIMILAR.
 - GALV. STEEL LADDER TO BULKHEAD, SEE DETAILS FOR ATTACHMENT AND CONSTRUCTION.
 - 36" WIDE COUNTER FLAP DOOR.
 - GAS METER.
 - PROTECTION BOLLARD.
 - METAL LOUVER W/ INSECT SCREEN ON @ MECHANICAL ROOM.
 - REFUSE CHUTE VENT WITH METAL WEATHER CAP.
 - 2' X 3' SMOKE VENT W/ INSECT SCREEN AT ELEVATOR BULKHEAD.
 - 6" HIGH 2'-0" DEEP BUILDING PROTECTION CONCRETE CURB AT DRIVEWAY AREA.
 - 42" HIGH 1/2" STAINLESS STEEL GUARDRAIL.
 - MOVABLE FURNITURE.
 - 20 SOFT VENTILATING SKYLIGHT W/ WOVEN WIRE SCREEN TOP AND BOTTOM, 72 SQ IN MIN. VENTILATOR PER BC 910.5.2.
 - 6 PLY BUILT UP ASPHALTIC ROOFING, W/ HIGHLY REFLECTIVE CAP SHEET, CLASS "A" ROOFING. PROVIDE GAFGLAS BY GAF BUILDING SOLUTIONS OR APPROVED EQ. SEE DETAIL SHEET FOR ADDITIONAL NOTES.
 - 42" HIGH PARAPET WALL, TYPICAL AT ALL ROOF EDGES.
 - TRENCH DRAIN.
 - HC RAMP, SLOPE 1:12.
 - PROVIDE MOTORIZED DAMPERS FOR STAIRS AND ELEVATOR SHAFT OPENINGS. SEE M-PLANS FOR SPECS.
 - EXTERIOR 36" WIDE GALVANIZED STEEL STAIR.

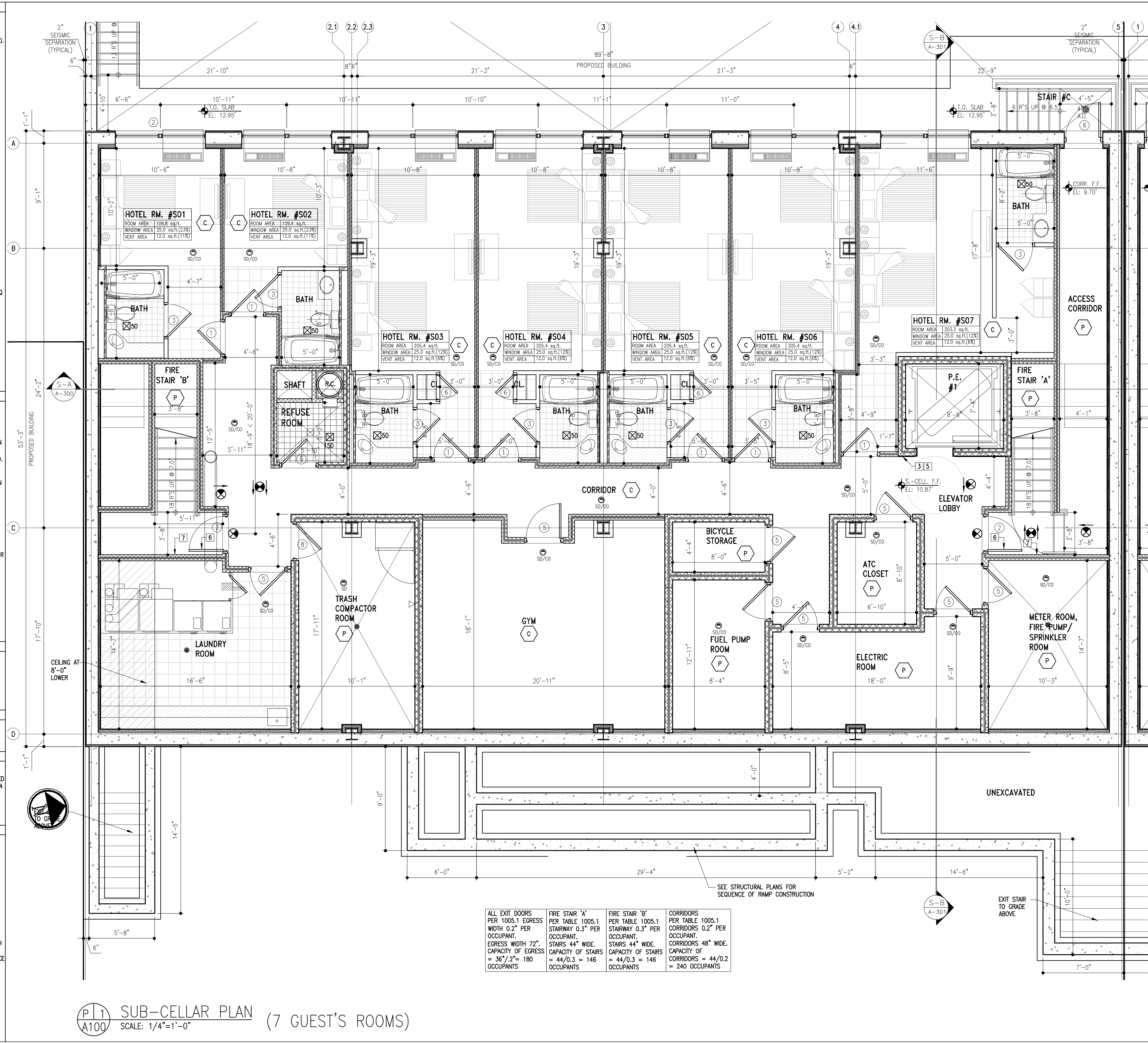
- LEGEND**
- PARTITION TYPE #1 - 8" CONC. BLK. INTERIOR PARTITION 3-HR F.R.
 - PARTITION TYPE #1A - 8" CONC. BLK. INTERIOR PARTITION 2-HR F.R.
 - PARTITION TYPE #2 - 3 1/2" MTL. STUD WALL W/ 5/8" GYP.BD. ON E.S. (N.R.)
 - PARTITION TYPE #3 - 2 1/2" MTL. STUD WALL W/ (1) 5/8" GYP.BD. ON ONE SIDE & (2) 5/8" GYP.BD. ON OPPOSITE SIDE (F.C. 60) 1-HR F.R. 50 TO 54 STC.
 - PARTITION TYPE #4 - 3 1/2" MTL. STUD WALL W/ 5/8" GYP.BD. ON E.S. (F.C. 60) 1-HR F.R. 50 TO 54 STC.
 - PARTITION TYPE #5 - 3 1/2" MTL. STUD WALL W/ 2-5/8" GYP.BD. ON E.S. 2-HR F.R. 55 TO 59 STC.
 - PARTITION TYPE #6 - 1-HR F.R. SHAFT WALL (SEE DETAIL PROVIDED). 50 TO 54 STC.
 - PARTITION TYPE #7 - 2-HR F.R. SHAFT WALL (SEE DETAIL PROVIDED). 50 TO 54 STC.
 - 8" CONC. BLK. EXT. WALL OR AS SHOWN ON PLAN W/ 2-1/2" MTL. FRAMING + BATT INSUL. INSIDE 1/2" STUCCO OUTSIDE. 3-HR F.R.
 - POURED CONCRETE WALL. SEE DWG. FOR THICKNESS.
- SD/CO - SMOKE DETECTOR SHALL COMPLY WITH SEC. 907.2.8.3 AND 907.2.9 OF NYC BUILDING CODE & C.O. WITH SEC. 908.7 OF NYC BUILDING CODE.
- 50 - EXHAUST FAN, CFM AS SHOWN.
- EL - EMERGENCY LIGHT.
- EXIT - LOCATION OF EXIT SIGN & LIGHT DIRECTION.
- FEC - RECESSED FIRE EXTINGUISHER CABINET, MOUNTING HEIGHT PER CODE.

- FINISH SCHEDULE**
- | | | | |
|----|---|----|-----------------------------|
| P | PAINTED OVER EXISTING CONCRETE FLOOR (COLOR T.B.D.) | T | TILE (COLOR T.B.D.) |
| C | CARPET (COLOR T.B.D.) | GT | GRANITE TILE (COLOR T.B.D.) |
| CT | CERAMIC TILE (COLOR T.B.D.) | | MILLWORK |

- FIRE RATING LEGEND**
- 1-HR FIRE RATED PARTITION
 - 2-HR FIRE RATED PARTITION
 - 3-HR FIRE RATED PARTITION

- ELEVATOR NOTES**
- ELEVATOR SHAFT DIMENSIONS ARE SHOWN AS PER SELECTED MANUFACTURER'S RECOMMENDATIONS.
 - GC TO VERIFY WITH ELEVATOR MANUFACTURER FOR THE SIZE OF REQUIRED SHAFT, OPENINGS, REQUIRED CLEARANCES, PIT DEPTH, BULKHEAD HEIGHT AND VENTING PRIOR TO COMMENCEMENT OF ANY WORK ON THE SHAFT WALL OR ITS STRUCTURE
 - GC TO PROVIDE SHOP DRAWINGS FOR ARCHITECT'S REVIEW AND APPROVAL CLEARLY SHOWING THE REQUIRED ROUGH OPENING PRIOR TO BUILDING OF THE SHAFT WALL AND STEEL STRUCTURE SUPPORTING SUCH SHAFT

- NOTES**
- FOR ALL STL. BEAMS PROVIDE 2-HR. F.R. MASTIC COATING AS PER UL N606, TYP.
 - FOR ALL STL. COLUMNS PROVIDE 2-HR. F.R. GYB. BD. AS PER UL X536, TYP.
 - G.C. TO INSTALL ACRYLIC CORNER GUARDS @ ALL CORNERS EQUAL OR LESS THAN 135° ANGLE.
 - ALL FINISHES TO BE COORDINATED W/ OWNER.
 - ENTIRE BUILDING TO BE SPRINKLERED (TO BE FILED AS A SEPARATE APPLICATION).
 - F. & L. SCALED SIGNS AT EACH STAIRWAY, ELEVATOR & STRATEGIC LOCATIONS SHOWING MEANS OF EGRESS AS PER MDL SEC. 64- TYPICAL FOR EACH FLOOR
 - CLOSED CIRCUIT FIRE ALARM REQUIRED AS PER MDL SEC. 64 TO BE FILED AS A SEPARATE APPLICATION.
 - PROVIDE 17"x44" OPENING @ FOUNDATION WALL FOR PTAC UNITS. VERIFY ROUGH OPENING SIZE W/ MANUFACTURER PRIOR TO ANY WORK.(MANUFACTURED BY MCQUAY INCREMENTAL COMFORT CONDITIONERS-PONS/PDNC)
 - MECHANICAL VENTILATION, AND EXHAUST TO BE FILED AS A SEPARATE APPLICATION UNDER MEP PLANS
 - PIT FLOOR BENEATH COLUMNS AND BUFFER TO BE FLAT AND LEVEL WITHIN 1/8" (C/M) FULL WIDTH OF HOISTWAY.
 - A FIXED VERTICAL STEEL LADDER TO PIT EXTENDING 4'-0" ABOVE THE SILL OF THE BOTTOM ENTRANCE AS LOCATED IN THE PLAN. LADDER WIDTH & PROJECTION FROM WALL PER LOCAL CODE.
 - PROVIDE PHOTO LUMINESCENT EXIT PATH MARKINGS IN COMPLIANCE W/ BC 1026.11
 - EXIT SIGNS TO COMPLY W/ BC 1026
 - PROVIDE FRESH AIR (OA POWER VENTILATION) IN TRASH COMPACTOR ROOM.
 - ALL WALLS, PARTITIONS AND FLOOR/CEILING ASSEMBLIES SHALL HAVE A SOUND TRANSMISSION CLASS (STC) OF NOT LESS THAN 50, AS PER BC 1207.2. SEE LEGEND BELOW.
 - PENETRATIONS THRU FIRE RATED ASSEMBLY SHALL BE FIRESTOPPED AS REQUIRED TO MAINTAIN FIRE RESISTANCE. SEE DETAILS ON SHEET A-511.
 - ALL MECHANICAL AND PLUMBING EQUIPMENT TO BE INSTALLED ON VIBRATION ISOLATOR PAD, WHEN ADJACENT TO MECHANICAL EQUIPMENT.



ALL EXIT DOORS PER 1005.1 EGRESS WIDTH 0.2" PER OCCUPANT. EGRESS WIDTH 72" = 36"/2" = 180 OCCUPANTS	FIRE STAIR 'A' PER TABLE 1005.1 STAIRWAY 0.3" PER OCCUPANT. STAIRS 44" WIDE. CAPACITY OF STAIRS = 44/0.3 = 146 OCCUPANTS	FIRE STAIR 'B' PER TABLE 1005.1 STAIRWAY 0.3" PER OCCUPANT. STAIRS 44" WIDE. CAPACITY OF STAIRS = 44/0.3 = 146 OCCUPANTS	CORRIDORS PER TABLE 1005.1 CORRIDORS 0.2" PER OCCUPANT. CORRIDORS 48" WIDE. CAPACITY OF CORRIDORS = 44/0.2 = 240 OCCUPANTS
---	--	--	--

P11 SUB-CELLAR PLAN (7 GUEST'S ROOMS)
SCALE: 1/4"=1'-0"

CONSULTANTS:

STRUCTURAL:

MEP/FA/FP/FS:

GEOTECH:

NO. DATE DESCRIPTION OF REVISION

THESE DOCUMENTS ARE COPYRIGHTED AND ARE SUBJECT TO COPYRIGHT PROTECTION AS "ARCHITECTURAL WORK" UNDER SEC.102 OF COPYRIGHT ACT, 17 U.S.O. AS AMENDED DECEMBER 1990 AND KNOWN AS ARCHITECTURAL WORKS COPYRIGHT PROTECTION ACT OF 1990. THE PROTECTION INCLUDES BUT IS NOT LIMITED TO OVERALL FORM AS WELL AS THE ARRANGEMENT AND COMPOSITION OF SPACES AND ELEMENTS OF THE DESIGN.

© COPYRIGHT 2015
M.S. SAVANI ARCHITECT, PC

Mss
M.S. SAVANI ARCHITECT, PC

148-45, HILLSIDE AVENUE
SUITE 201
JAMAICA, NY 11435
TEL: 718.657.6222
FAX: 718.657.6226
mss@mssarch.com

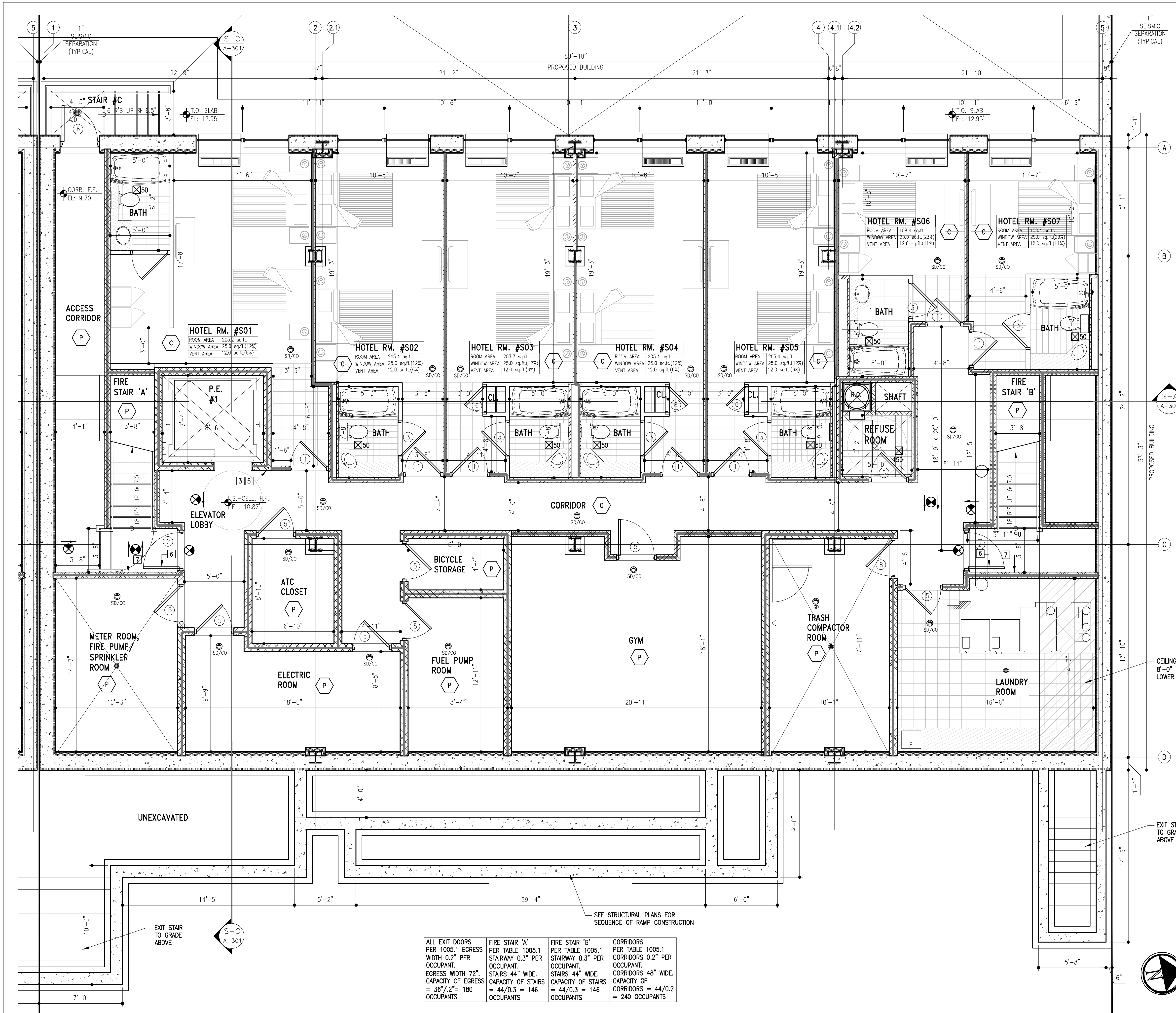
CLIENT:
SUPERIOR HOSPITALITY MANAGEMENT LLC
236 CAUSEWAY ROAD
LAWRENCE, NY 11559

DOB STAMP & SIGNATURE:

PROJECT:
PROPOSED 5-STORY W/ SUB-CELLAR AND CELLAR TRANSIENT HOTEL
1021 BEACH 21 STREET,
QUEENS, NY 11691

TITLE:
SUB-CELLAR PLAN

SEAL & SIGNATURE: DATE: 08.18.15
PROJECT NO.: SANDHU-11
DRAWING BY: AC
CHK. BY: MSS
DWG NO.:
A-100.00
CAD FILE NO: 13 OF 51
Z. SANDHU:



CONSTRUCTION PLAN LEGEND

- 1 - VIEWING DEVICE AT ENTRY DOORS TO GUEST ROOMS, TYPICAL. ALL ENTRY DOORS TO BE SELF CLOSING. SEE DOOR SCHEDULE FOR DETAILS ON DWG. A-600.
- 2 - ALL FINISHES AT CORRIDOR TO BE CLASS 'B', REFER TO FINISH SCHEDULE.
- 3 - DISPLAY OF PRINTED FLOOR PLAN WITH ALL MEANS OF EGRESS SHOWN & LABELED.
- 4 - TACTILE SIGN INDICATING EXIT COMPLYING W/ ANSI 117.1 AT EACH STAIR.
- 5 - TACTILE SIGNAGE, AUDIO-VISUAL INDICATORS, SIGN OF LIFE, AND ADDITIONAL ITEMS AT ELEVATOR ENTRY. TYP. FOR EACH FLOOR. REFER TO ELEVATOR DETAILS. STAIR FLOOR NUMBER AND IDENTIFICATION SIGNS AS PER BC 1019.1.7 TYP. STAIRWAY IDENTIFICATION SIGNS SHALL BE PROVIDED ON BOTH SIDES OF EACH STAIR DOOR.
- 6 - COMPACTOR BY "HARMONY ENTERPRISES", MDL# 450SS.
- 7 - HOSE BIB PER CODE. SEE PLUMBING DRAWINGS.
- 8 - PIT LADDER AND LIGHTING CONTROL AT ELEVATOR PIT. REFER TO ELEVATOR PLANS AND DETAILS FOR ADDITIONAL NOTES.
- 9 - ELEVATOR SUMP PUMP. REFER TO PLUMBING AND ELECTRICAL.
- 10 - 6" ROOF DRAIN. SEE DETAILS. SLOPE ROOFING TO DRAIN, TYP THROUGHOUT ROOF.
- 11 - 4" OVERFLOW DRAIN. PITCH ROOFING TO DRAIN, TYP. THROUGH OUT ROOFING.
- 12 - ROOF SCUPPER, PITCH ROOFING TO SCUPPER, TYP THROUGHOUT ROOF.
- 13 - ROOF DRAIN AND LEADER DOWN.
- 14 - SPLASH BLOCK.
- 15 - THERMAL ENTRY DOOR. SEE DOOR SCHEDULE.
- 16 - ICE MAKER BY MANITOWOC, MODEL MA160, SEE PLUMBING.
- 17 - FROSTED TEMPERED GLASS PARTITION.
- 18 - ALUMINUM CANOPY.
- 19 - RECESSED FIRE EXTINGUISHER CABINET, MODEL 2720R BY LARSEN OR SIMILAR.
- 20 - GALV. STEEL LADDER TO BULKHEAD, SEE DETAILS FOR ATTACHMENT AND CONSTRUCTION.
- 21 - 36" WIDE COUNTER FLAP DOOR.
- 22 - GAS METER.
- 23 - PROTECTION BOLLARD.
- 24 - METAL LOUVER W/ INSECT SCREEN ON @ MECHANICAL ROOM.
- 25 - REFUSE CHUTE VENT WITH METAL WEATHER CAP.
- 26 - 2' X 3' SMOKE VENT W/ INSECT SCREEN AT ELEVATOR BULKHEAD.
- 27 - 6" HIGH 2'-0" DEEP BUILDING PROTECTION CONCRETE CURB AT DRIVEWAY AREA.
- 28 - 42" HIGH 1/2" STAINLESS STEEL GUARDRAIL.
- 29 - MOVABLE FURNITURE.
- 30 - 20 SQFT VENTILATING SKYLIGHT W/ WOVEN WIRE SCREEN TOP AND BOTTOM. 72 SQ IN MIN. VENTILATOR PER BC 910.5.2.
- 31 - 6 PLY BUILT UP ASPHALTIC ROOFING, W/ HIGHLY REFLECTIVE CAP SHEET, CLASS 'A' ROOFING. PROVIDE GAFGLAS BY GAF BUILDING SOLUTIONS OR APPROVED EQ. SEE DETAIL SHEET FOR ADDITIONAL NOTES.
- 32 - 42" HIGH PARAPET WALL, TYPICAL AT ALL ROOF EDGES.
- 33 - TRENCH DRAIN.
- 34 - HC RAMP, SLOPE 1:12.
- 35 - PROVIDE MOTORIZED DAMPERS FOR STAIRS AND ELEVATOR SHAFT OPENINGS. SEE M-PLANS FOR SPECS.
- 36 - EXTERIOR 36" WIDE GALVANIZED STEEL STAIR.

LEGEND

- PARTITION TYPE #1 - 8" CONC. BLK. INTERIOR PARTITION
- 3-HR F.R.
- PARTITION TYPE #1A - 8" CONC. BLK. INTERIOR PARTITION
- 2-HR F.R.
- PARTITION TYPE #2 - 3 1/2" MTL. STUD WALL W/ 5/8" GYP.BD. ON E.S. (N.R.)
- PARTITION TYPE #3 - 2 1/2" MTL. STUD WALL W/ (1) 5/8" GYP.BD. ON ONE SIDE & (2) 5/8" GYP.BD. ON OPPOSITE SIDE (F.C. 60)
- 1-HR F.R. 50 TO 54 STC.
- PARTITION TYPE #4 - 3 1/2" MTL. STUD WALL W/ 5/8" GYP.BD. ON E.S. (F.C. 60) 1-HR F.R. 50 TO 54 STC.
- PARTITION TYPE #5 - 3 1/2" MTL. STUD WALL W/ 2-5/8" GYP.BD. ON E.S. 2-HR F.R. 55 TO 59 STC.
- PARTITION TYPE #6 - 1-HR F.R. SHAFT WALL (SEE DETAIL PROVIDED). 50 TO 54 STC.
- PARTITION TYPE #7 - 2-HR F.R. SHAFT WALL (SEE DETAIL PROVIDED). 50 TO 54 STC.
- 8" CONC. BLK. EXT. WALL OR AS SHOWN ON PLAN W/ 2-1/2" MTL. FRAMING + BATT INSUL. INSIDE 1/2" STUCCO OUTSIDE. 3-HR F.R.
- POURED CONCRETE WALL. SEE DWG. FOR THICKNESS.
- SD/CO - SMOKE DETECTOR SHALL COMPLY WITH SEC. 907.2.6.3 AND 907.2.9 OF NYC BUILDING CODE & C.O. WITH SEC. 908.7 OF NYC BUILDING CODE.
- 50 - EXHAUST FAN, CFM AS SHOWN.
- EMERGENCY LIGHT.
- LOCATION OF EXIT SIGN & LIGHT DIRECTION.
- FEC - RECESSED FIRE EXTINGUISHER CABINET, MOUNTING HEIGHT PER CODE.

FINISH SCHEDULE

- P - PAINTED OVER EXISTING CONCRETE FLOOR (COLOR T.B.D.)
- C - CARPET (COLOR T.B.D.)
- CT - CERAMIC TILE (COLOR T.B.D.)
- T - TILE (COLOR T.B.D.)
- GT - GRANITE TILE (COLOR T.B.D.)
- M - MILLWORK

FIRE RATING LEGEND

- 1 - 1-HR FIRE RATED PARTITION
- 2 - 2-HR FIRE RATED PARTITION
- 3 - 3-HR FIRE RATED PARTITION

ELEVATOR NOTES

- A) ELEVATOR SHAFT DIMENSIONS ARE SHOWN AS PER SELECTED MANUFACTURER'S RECOMMENDATIONS.
- B) GC TO VERIFY WITH ELEVATOR MANUFACTURER FOR THE SIZE OF REQUIRED SHAFT, OPENINGS, REQUIRED CLEARANCES, PIT DEPTH, BULKHEAD HEIGHT AND VENTING PRIOR TO COMMENCEMENT OF ANY WORK ON THE SHAFT WALL OR ITS STRUCTURE.
- C) GC TO PROVIDE SHOP DRAWINGS FOR ARCHITECT'S REVIEW AND APPROVAL CLEARLY SHOWING THE REQUIRED ROUGH OPENING PRIOR TO BUILDING OF THE SHAFT WALL AND STEEL STRUCTURE SUPPORTING SUCH SHAFT.

NOTES

- 1) FOR ALL STL. BEAMS PROVIDE 2-HR. F.R. MASTIC COATING AS PER UL N606. TYP.
- 2) FOR ALL STL. COLUMNS PROVIDE 2-HR. F.R. GYB. BD. AS PER UL X536. TYP.
- 3) G.C. TO INSTALL ACRYLIC CORNER GUARDS @ ALL CORNERS EQUAL OR LESS THAN 135° ANGLE.
- 4) ALL FINISHES TO BE COORDINATED W/ OWNER.
- 5) ENTIRE BUILDING TO BE SPRINKLERED (TO BE FILED AS A SEPARATE APPLICATION).
- 6) F. & L. SCALED SIGNS AT EACH STAIRWAY, ELEVATOR & STRATEGIC LOCATIONS SHOWING MEANS OF EGRESS AS PER MDL SEC. 64- TYPICAL FOR EACH FLOOR.
- 7) CLOSED CIRCUIT FIRE ALARM REQUIRED AS PER MDL SEC. 64 TO BE FILED AS A SEPARATE APPLICATION.
- 8) PROVIDE 17"44" OPENING @ FOUNDATION WALL FOR PTAC UNITS. VERIFY ROUGH OPENING SIZE W/ MANUFACTURER PRIOR TO ANY WORK. (MANUFACTURED BY MCGUAY INCREMENTAL COMFORT CONDITIONERS-PONS/PONC)
- 9) MECHANICAL VENTILATION, AND EXHAUST TO BE FILED AS A SEPARATE APPLICATION UNDER MEP PLANS
- 10) PIT FLOOR BENEATH COLUMNS AND BUFFER TO BE FLAT AND LEVEL WITHIN 1/8" (3MM) FULL WIDTH OF HOISTWAY.
- 11) A FIXED VERTICAL STEEL LADDER TO PIT EXTENDING 4'-0" ABOVE THE SILL OF THE BOTTOM ENTRANCE AS LOCATED IN THE PLAN. LADDER WIDTH & PROJECTION FROM WALL PER LOCAL CODE.
- 12) PROVIDE PHOTO LUMINESCENT EXIT PATH MARKINGS IN COMPLIANCE W/ BC 1026.11
- 13) EXIT SIGNS TO COMPLY W/ BC 1026
- 14) PROVIDE FRESH AIR (VA POWER VENTILATION) IN TRASH COMPACTOR ROOM.
- 15) ALL WALLS, PARTITIONS AND FLOOR/CEILING ASSEMBLIES SHALL HAVE A SOUND TRANSMISSION COEFFICIENT (STC) OF NOT LESS THAN 50, AS PER BC 1207.2. SEE LEGEND BELOW.
- 16) PENETRATIONS THRU FIRE RATED ASSEMBLY SHALL BE FIRE STOPPED AS REQUIRED TO MAINTAIN FIRE RESISTANCE. SEE DETAILS ON SHEET A-511.
- 17) ALL MECHANICAL AND PLUMBING EQUIPMENT TO BE INSTALLED ON VIBRATION ISOLATOR PAD, WHEN ADJACENT TO MECHANICAL EQUIPMENT.

CONSULTANTS:

STRUCTURAL:	
MEP/FA/PPP/FS:	
GEOTECH:	
NO. DATE DESCRIPTION OF REVISION	

THESE DOCUMENTS ARE COPYRIGHTED AND ARE SUBJECT TO COPYRIGHT PROTECTION AS "ARCHITECTURAL WORK" UNDER SEC.102 OF COPYRIGHT ACT 17 U.S.O. AS AMENDED DECEMBER 1990 AND KNOWN AS ARCHITECTURAL WORKS COPYRIGHT PROTECTION ACT OF 1990. THE PROTECTION INCLUDES BUT IS NOT LIMITED TO OVERALL FORM AS WELL AS THE ARRANGEMENT AND COMPOSITION OF SPACES AND ELEMENTS OF THE DESIGN.

© COPYRIGHT 2015
M.S. SAVANI ARCHITECT, PC

Mss
M.S. SAVANI ARCHITECT, PC
148-45, HILLSIDE AVENUE
SUITE 201
JAMAICA, NY 11435
TEL: 718.657.6222
FAX: 718.657.6226
mss@mssarch.com

CLIENT:
SUPERIOR HOSPITALITY MANAGEMENT LLC
236 CAUSEWAY ROAD
LAWRENCE, NY 11559

DOB STAMP & SIGNATURE:

PROJECT:
PROPOSED 3-STORY W/ SUB-CELLAR AND CELLAR TRANSIENT HOTEL
1025 BEACH 21 STREET,
QUEENS, NY 11691

TITLE:
SUB-CELLAR PLAN

SEAL & SIGNATURE: DATE: 08.18.15
PROJECT NO.: SANDHU-11
DRAWING BY: AC
CHK. BY: MSS
DWG NO.:
A-100.00
CAD FILE NO: 13 OF 50
Z. SANDHU

P1 SUB-CELLAR PLAN (7 GUEST'S ROOMS)
SCALE: 1/4"=1'-0"

ALL EXIT DOORS PER 1005.1 EGRESS WIDTH 0.2" PER OCCUPANT. EGRESS WIDTH 72". CAPACITY OF EGRESS = 36"/2" = 180 OCCUPANTS	FIRE STAIR 'A' PER TABLE 1005.1 STAIRWAY 0.3" PER OCCUPANT. STAIRS 44" WIDE. CAPACITY OF STAIRS = 44/0.3 = 146 OCCUPANTS	FIRE STAIR 'B' PER TABLE 1005.1 STAIRWAY 0.3" PER OCCUPANT. STAIRS 44" WIDE. CAPACITY OF STAIRS = 44/0.3 = 146 OCCUPANTS	CORRIDORS PER TABLE 1005.1 CORRIDORS 0.2" PER OCCUPANT. CORRIDORS 48" WIDE. CAPACITY OF CORRIDORS = 44/0.2 = 240 OCCUPANTS
---	--	--	--